

HBTS RIGID SECONDARY PACKAGING AND EOL SOLUTIONS

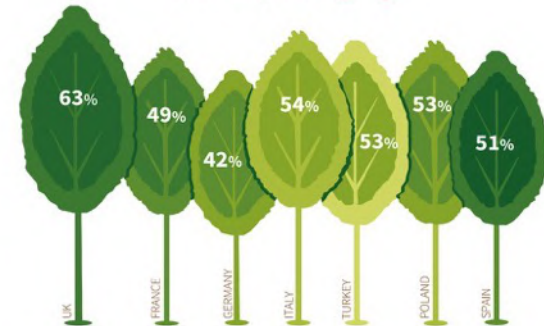
Based in TURIN in the North West of Italy, HBTS, part of the DM Packaging Group, has grown into one of the **most comprehensive and innovative** companies for secondary and EOL packaging machinery, the **HBTSRIGID** range.

Conveniently located 20 minutes away from Turin (TRN) International Airport, year after year we have strengthened our presence in the local and international markets delivering highly customized and effective solutions to our Customers.

As we grow, we have expanded our facilities and our skills by recruiting young thus highly qualified industrial designers and field engineers and reinforced our Customer Service Department to an outstanding reactivity level. Our Sales team is highly trained on both technical and economics matters, understanding very well **payback dynamics and value** and we can support our worldwide Customers in the selection and implementation of the most appropriate solutions to meet their needs and **maximize their profits**.

When it comes to integrated systems, no matter how complex they are, HBTS can offer a **unique and unprecedented accountability degree** since within our Group we are own designing and manufacturing most of the technologies involved being cartoners, case packers, flow wrappers, etc. Common designing platforms throughout our Group secure smooth and **seamless integration** and **trouble free** future servicing and upgrades.

Consumers across Europe think cartonboard is the most environmentally friendly form of packaging



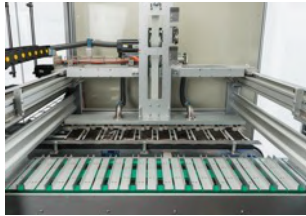
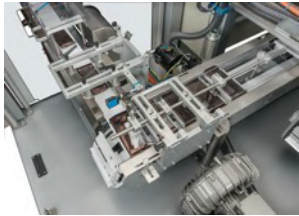
- HORIZONTAL CARTONERS
- TOP LOADING CASE PACKERS
- SIDE LOADING CASE PACKERS
- SINGLE AND MULTIPARTS WRAP-AROUND CASE PACKERS
- BOX FORMING MACHINES
- BOX CLOSING MACHINES
- SPECIAL SECONDARY PACKAGING



horizontal cartoners

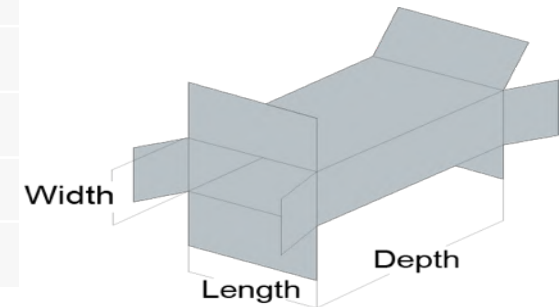


HML series cartoners



HML series data sheet

MODEL	Center pitch (mm)	L	W	D	SPEED (max)
HML i35X	349,25	80/310	25/100	130/400	35
HML i40	254 349,25	60/260	20/80	150/280	40
HML i70	127 158,75	50/180	20/80	110/200	70
HML c120	222,25 317,5	60/260	20/80	130/280	120
HML c120X	412,75	150/370	30/120	180/380	120
HML c200	127 158,75 222,25	50/195	15/80	120/280	180
HML c400	127 158,75	40/135	10/80	120/220	400





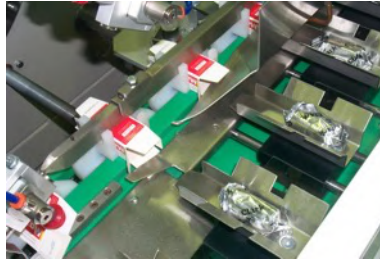
The HML series of intermittent (i) and continuous (c) horizontal cartoners represents the state of the art in mid to high speed requirements boxing applications.

Fully servo driven, the HML cartoners automatically open, fill and close folding cartons made out of coated or uncoated full cardboard. Great ease of operation, quick and reproducibly format change along with a fully developed technology make of these cartoners an economical investment ensuring high quality product's boxing operations year after year.

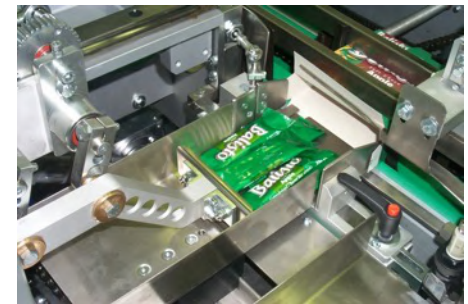
The large format's range covers many cartons dimensions and various product groups.

Packaging applications

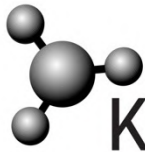
- Bags (pillow, gusseted, block)
- Candy, cereals, chocolate and energy bars
- Bottles
- Cosmetics cans
- Flow wrap for biscuits and chocolate in trays and frozen pies
- Three and four sided sealed sachets of various products
- Frozen pizza and other frozen food
- Stick packs and pouches
- Paste filled tubes
-your product !!!



- Established machine technology with standard components
- Product-sparing handling
- Quick change-over times
- Constant optimal carton image
- Low maintenance and service costs
- Flexible customized solution
- Future-oriented packaging
- High product competence
- Great availability



Advantages



Key Elements

- 1 Rugged open frame welded steel framing on levelling elements
- 2 Full-height guard doors securing maximum accessibility
- 3 Optimal view on product flow, machine operation and status
- 4 Improved ergonomics
- 5 All the mechanical parts are located inside the framing
- 6 Available in left to right operation flow or mirrored execution
- 7 Variety of automatic feeding systems available
- 8 Pitch configuration for various box sizes
- 9 Positive box erection
- 10 Carton feeder by pick & place arm or rotary multi arm feeder
- 11 No product no box | No box no load features
- 12 Rotating system to open inner flaps
- 13 Changeover time 5/10 min approximately

HBTSRIGID

Horizontal Cartoners

FULLY SERVO DRIVEN by independent brushless motors ensuring leaner machine operation and less mechanical parts to provide the highest flexibility and fit current and future product and packaging needs. HBTSRIGID motion platforms :

Schneider Electric PackDrive 3

Rockwell Automation Allen Bradley



integrated case packers

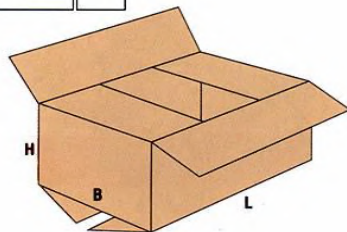
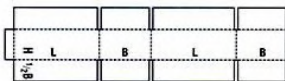


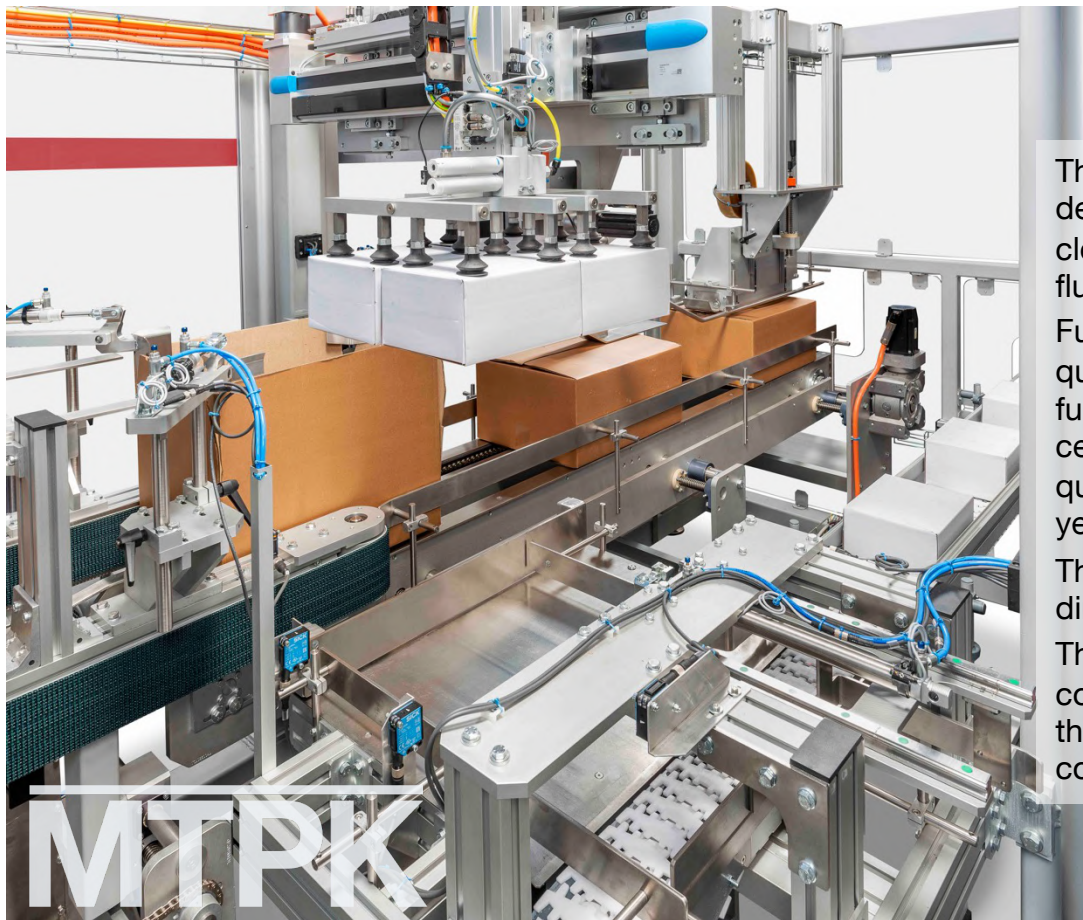
MTPK case packers



MTPK series data sheet

MODEL	L	B	H	SPEED/1' (max)
MTPK 15	200/500	120/400	100/350	15
MTPK 8C	260/500	200/400	200/500	8





The MTPK integrated top loader case packers are designed for the automatic erection, filling and closing, by tape or hot melt, of RSC/HSC/OSC fluted cardboard outer cases.

Fully servo driven with great ease of operation, quick and reproducibly format change along with a fully developed technology make of these working cells an economical investment ensuring high quality product's case packing operations year after year.

The large format's range covers many cases dimensions and various product groups.

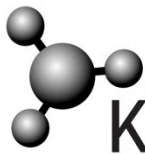
The MTPK are representing the ideal EOL compliment of complex packaging systems and they are available with a variety of product's collating and feeding solutions.

Packaging applications

- Bags (pillow, gusseted, block)
- Candy, cereals, chocolate and energy bars
- Bottles
- Cosmetics cans
- Flow wrap for biscuits and chocolate in trays and frozen pies
- Three and four sided sealed sachets of various products in boxes
- Boxed frozen pizza and other frozen food
- Stick packs and pouches
- Paste filled tubes
-your product !!!

- Established machine technology with standard, worldwide available, components
- Product-sparing handling
- Quick change-over times
- Great availability
- Constant optimal case image
- Low maintenance and service costs
- Flexible customized solution
- Future-oriented packaging
- High product competence

Advantages



Key Elements

- 1 Rugged open frame welded steel framing on levelling elements
- 2 Full-height guard doors securing maximum accessibility
- 3 Optimal view on product flow, machine operation and status
- 4 Improved ergonomics
- 5 All the mechanical parts are located inside the framing
- 6 Available in left to right operation flow or mirrored execution
- 7 Variety of automatic feeding systems available
- 8 Pitch configuration for various case sizes
- 9 Vertical positive cases erection by pick & place arm with suction cups
- 10 No case no load feature
- 11 Pneumatic bottom inner flaps closing
- 12 Low level magazine detection
- 13 Changeover time 5/10 min approximately

HBTSRIGID

Integrated top loaders



FULLY SERVO DRIVEN by independent brushless motors ensuring leaner machine operation and less mechanical parts to provide the highest flexibility and fit current and future product and packaging needs. HBTSRIGID motion platforms :

Schneider Electric PackDrive 3

Rockwell Automation Allen Bradley

THE NEW MTPK |8C

The new MTPK|8C (compact) was specifically designed for congested production environments requiring automatic case packing with limited floor space available.

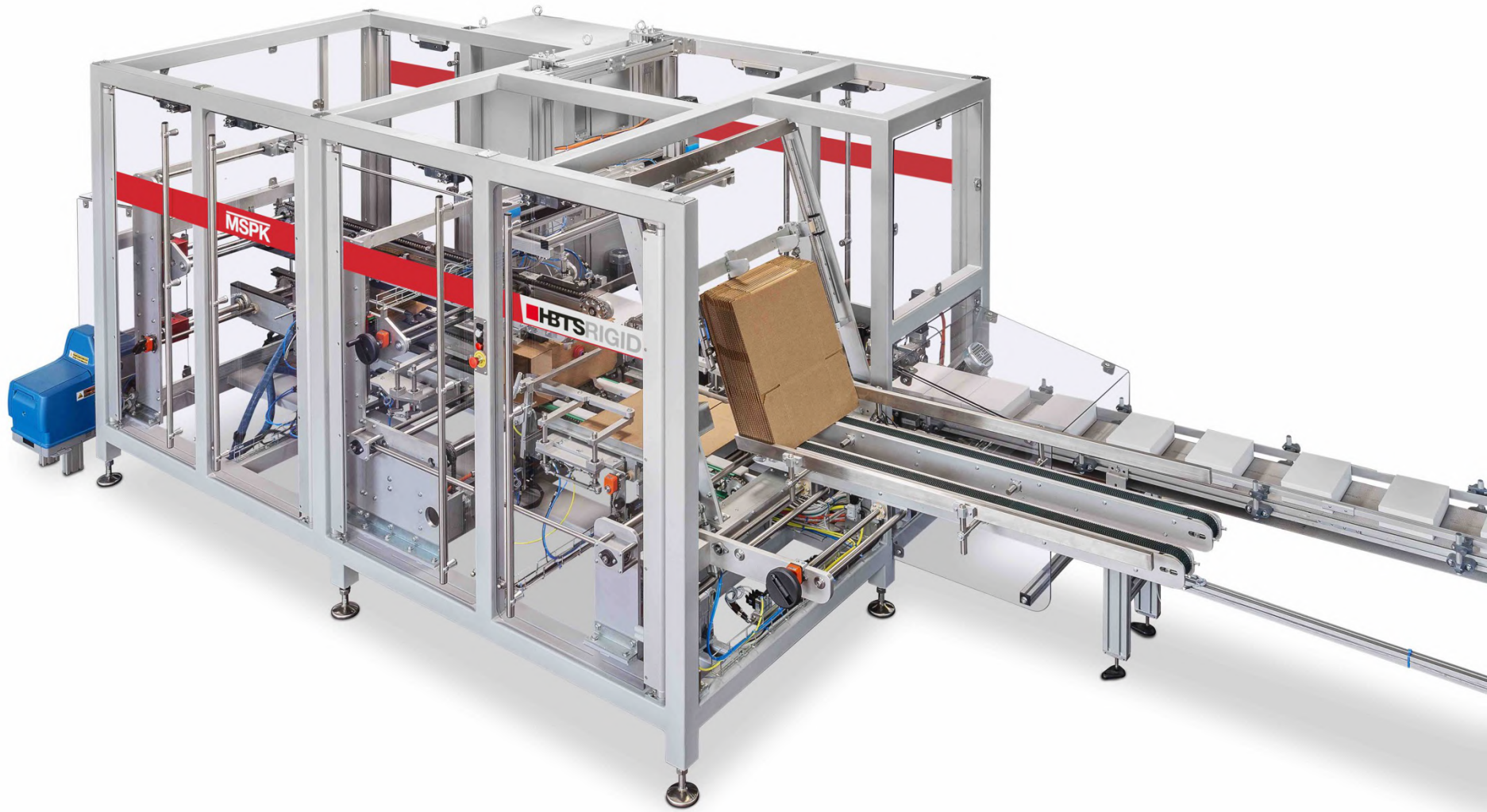
It is likely the most compact fully integrated case packing working cell for regular shaped products in the market measuring merely **L2700xW2600xH2270mm.**

.....**BECAUSE SPACE MATTERS !!!!**

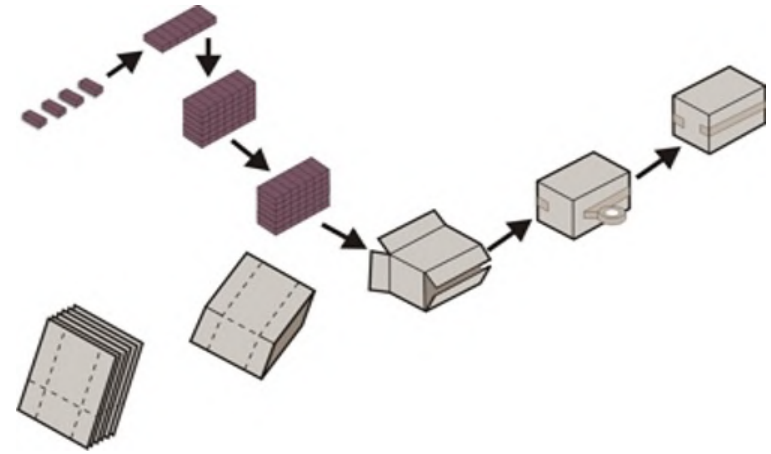




integrated case packers

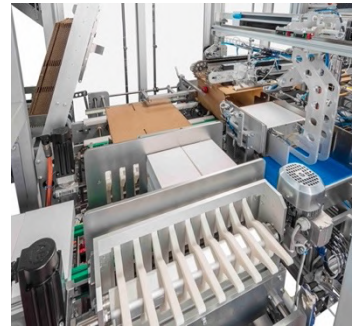
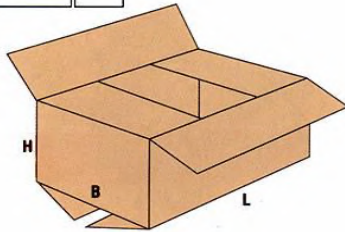
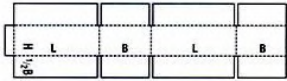


MSPK case packers



MSPK data sheet

MODEL	L	B	H	SPEED/1' (max)
TSL 15	200/600	150/400	150/350	15





The MSPK integrated side loader case packers are designed for the automatic erection, filling and closing, by tape or hot melt, of RSC/HSC/OSC fluted cardboard outer cases of regular shaped individual or bundled products.

Fully servo driven with great ease of operation, quick and reproducibly format change along with a fully developed technology make of these working cells an economical investment ensuring high quality product's case packing operations year after year.

The large format's range covers many cases dimensions and various product groups.

The MSPK are representing the ideal EOL compliment of complex packaging systems and they are available with a variety of product's collating and feeding solutions.

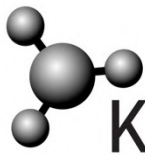
Packaging applications

Individual products and anything that can be collated in firm bundles like cartons.



- Established machine technology with standard, worldwide available, components
- Product-sparing handling
- Quick change-over times
- Great availability
- Constant optimal case image
- Low maintenance and service costs
- Flexible customized solution
- Future-oriented packaging
- High product competence

Advantages



Key Elements

- 1 Rugged open frame welded steel framing on levelling elements
- 2 Full-height guard doors securing maximum accessibility
- 3 Optimal view on product flow, machine operation and status
- 4 Improved ergonomics
- 5 All the mechanical parts are located inside the framing
- 6 Available in left to right operation flow or mirrored execution
- 7 Variety of automatic feeding systems available
- 8 Pitch configuration for various case sizes
- 9 Horizontal positive cases erection by pick & place arm with suction cups
- 10 No case no load feature
- 11 Flaps closing kickers
- 12 Low level magazine detection
- 13 Changeover time 5/10 min approximately

HBTSRIGID

Integrated side loaders



FULLY SERVO DRIVEN by independent brushless motors ensuring leaner machine operation and less mechanical parts to provide the highest flexibility and fit current and future product and packaging needs. HBTSRIGID motion platforms :

Schneider Electric PackDrive 3

Rockwell Automation Allen Bradley



Wrap around case packers



MWPK series

3 Major Benefits of Wraparound Cases

While traditional RSC may provide a sense of familiarity to consumers, wraparound containers offer 3 amazing benefits that are just too hard to ignore.

1 WRAPAROUND CASES CUT TRADITIONAL SEALING COSTS

RSC's come with a "supplier fee" of sorts: the material supplier charges a fee to form and seal the manufacturer's flap. If you adopt wraparound cases instead, you no longer have to endure this charge.

2 WRAPAROUND CASES SUPPORT RIGHT-SIZE PACKAGING

Since the corrugated is made to fit the dimensions of the product, waste is minimized. Not only is this good for any overall bottom line, it's good for the environment too.

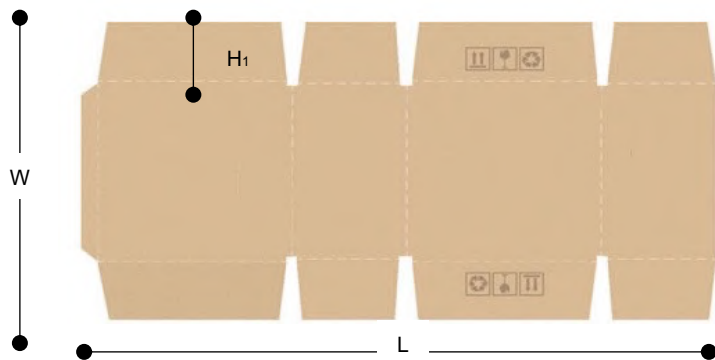
3 MORE WRAPAROUND BLANKS FIT INTO THE MAGAZINE

Compared to wraparound blanks, the magazines of automatic case-making systems can only hold half the amount of RSC blanks; therefore, wraparound cases can reduce the need to fill the magazine as often.

MWPK series

MWPK series data sheet – BLANK (mm)

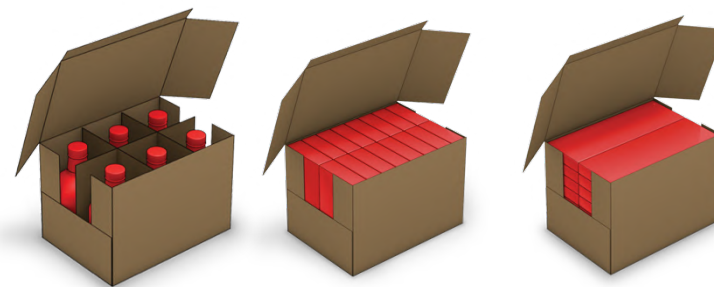
MODEL	L	W	H1
MWPK 400 S M			
MWPK 600 S M	500/1200	400/600	40/100
MWPK LF S	600/1400	300/880	50/150



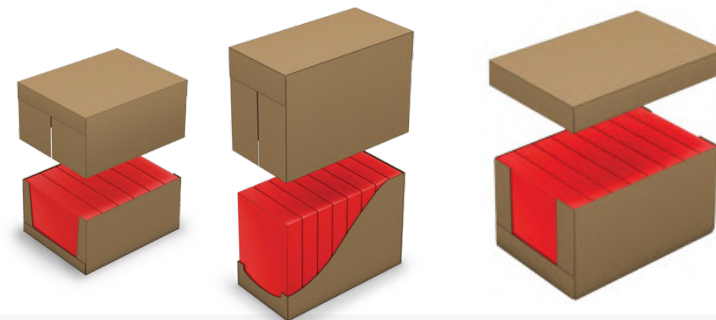
MWPK series data sheet – CASE (mm)

MODEL	L	W	H	SPEED'
MWPK 400 S M	100/250	150/300	60/200	14
MWPK 600 S M	120/400	150/400	120/250	20
MWPK LF S	200/420	250/600	250/420	8

EXAMPLES OF FULL WRAP [S]



EXAMPLES OF MULTI WRAP [M]



The Tray-Hood SRP
that is becoming
The Standard

MWPK

The wrap around case packers of the MWPK series are designed for maximum flexibility and SRP top quality presentation.

MWPK comprehensive range covers almost any sizing request, from the very small formats of MWPK|SF to the very toll cases of MWPK|LF.

The MWPK series is completed by full wrap out of a single blank as well as multi wrap formats such as in try & hood formats. The equipment can operate with fluted cardboard or suitable plain solid cardboard.

Fully servo driven with great ease of operation, quick and reproducibly format change along with a fully developed technology make of these working cells an economical investment ensuring high quality product's case packing operations year after year.

The large format's range covers many cases dimensions and various product groups.

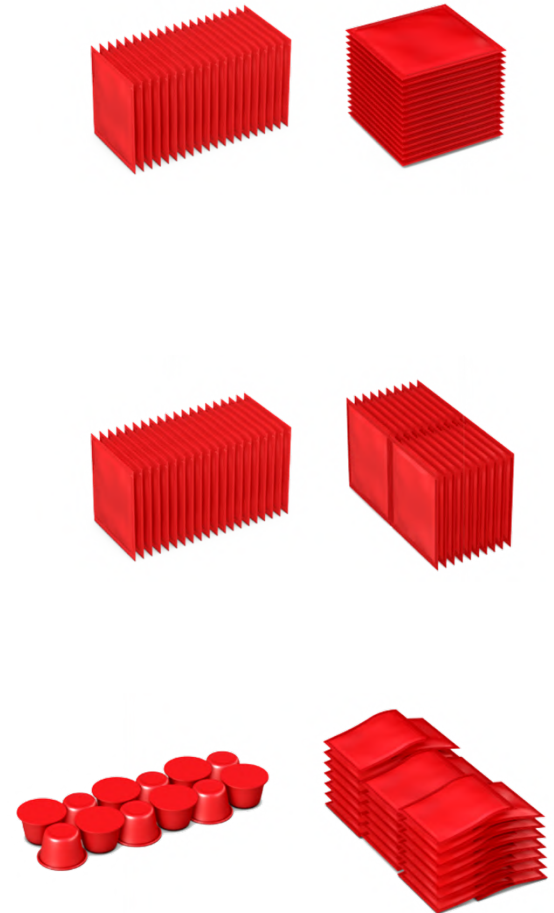
The MWPK series is representing a cost effective EOL compliment of complex packaging systems and they are available with a variety of product's collating and feeding solutions.

Packaging applications

- Bags (pillow, gusseted, block)
- Candy, cereals, chocolate and energy bars
- Bottles & cans
- Cosmetics containers
- Flow wrap for biscuits and chocolate in trays and frozen pies
- Three and four sided sealed sachets of various products in boxes
- Stick packs and pouches
- Paste filled tubes
-YOUR PRODUCT !!!

Advantages

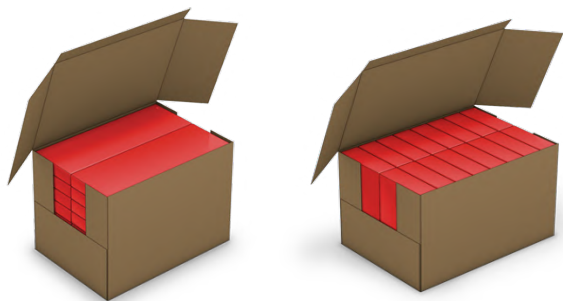
- Established thus innovative technology with standard worldwide available components
- **Great arrangements flexibility**
- Product-sparing handling
- Quick change-over times
- Great availability
- Constant optimal case image
- Low maintenance and service costs
- Flexible customized solution
- Future-oriented packaging
- High product competence

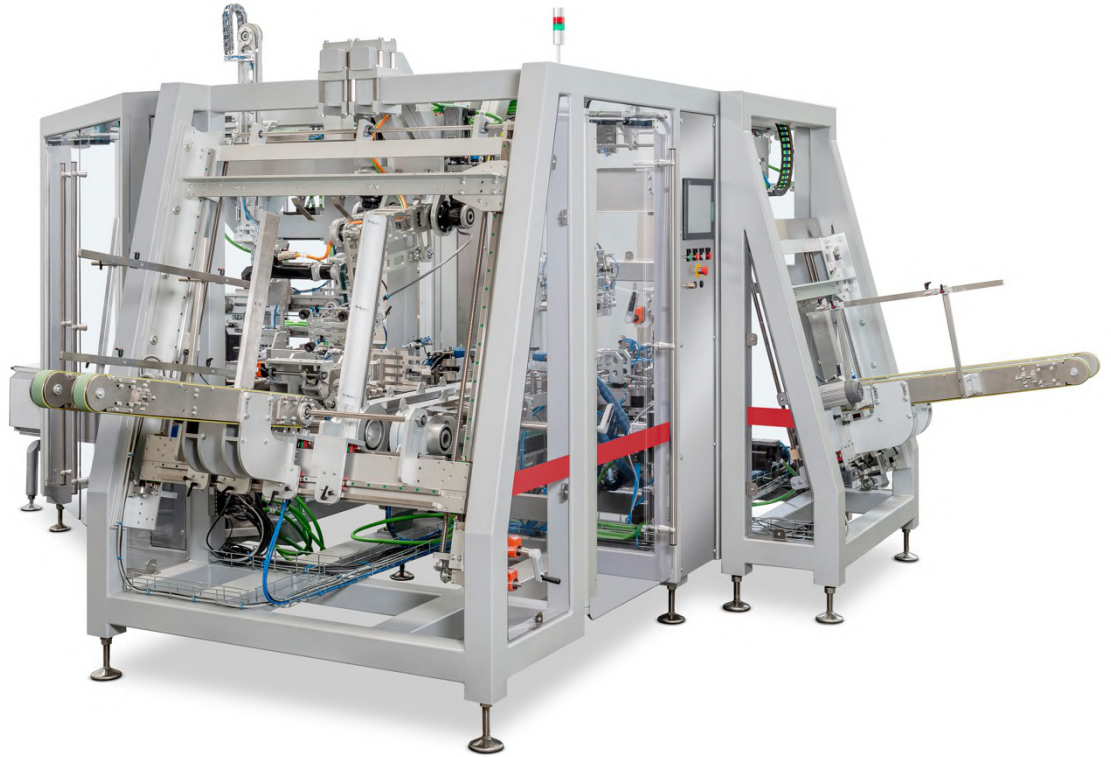
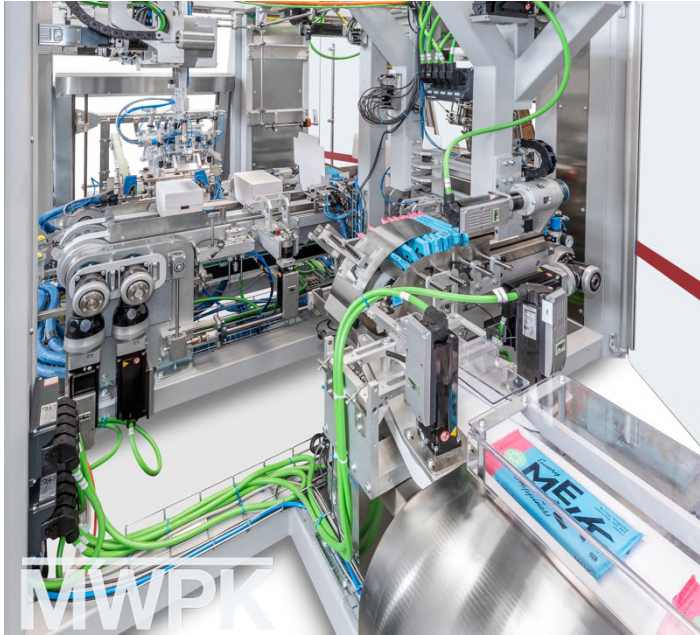




MWPK|S

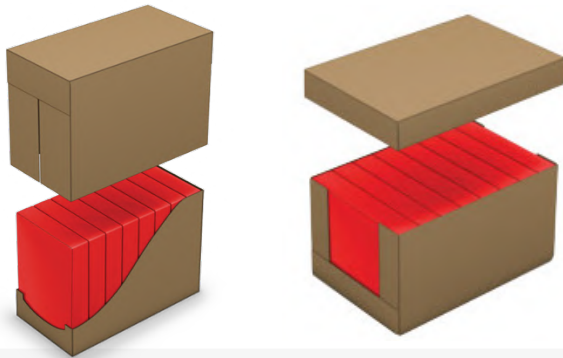
Intermittent motion full wrap casing for mid to high speed available in 400 and 600mm chain pitch. Suitable for a variety of products feeding systems for demanding applications for single or multiple product's patterns. Blank's feeding from adjustable vertical magazine. Versatile: in 600mm pitch can also operate as side loader !!





MWPK|M

Intermittent motion multi parts wrap casing for mid to high speed for tray & hoods styles and equivalent. Available with a variety of products feeding systems for demanding applications for single or multiple product's patterns. Blank's feeding from vertical magazine.





230, Strada del Cascinotto

10156 TORINO IT

Tel +39 011 922 4293

www.hbts.it

sales@hbts.it

**THANK YOU FOR
YOUR TIME**
