



your light on demand

**COMPANY PROFILE**

# With passion since 1973

**1973**

On 12th July, the passion and creativity of six founding partners give birth to S.L.I.M.

**1974**

The company moves from Monza to Macherio and purchases new moulding presses for plastics components.

**1984**

The founding team is reduced and focusses its energies on a significant process of growth. The company moves to the current headquarter in Biassono and further increases its commercial network, in Italy and abroad.

**1990**

Tooling and equipment departments are extended to guarantee quick and effective restoration and maintenance of the moulds.

**1999**

The Company obtains ISO 9001 Certification.

**2000**

S.L.I.M. starts proposing its clients its own line of LED indicators.

**2018**

Today, being at the second generation, the company is facing new changes and an innovative phase.

## S.L.I.M.

**Società Lampade Interruttori Mercurio**

In 1973, the interaction of six people, each one with their own experience in the mechanical engineering and electrical sectors, gave birth to S.L.I.M. At the beginning the production consisted of neon lamps with glass bulbs and electromechanical switches. Being always sensitive and receptive to technological development, the company increased, already in 1974, its production line with moulding presses for plastics components, which led to a growth of the production activities.

In 1975, S.L.I.M. took part in the trade fair of Milan, and afterwards to other trade fairs abroad: Cologne, Paris, Hannover, Madrid. The following acquisition of VETO company allowed S.L.I.M. to increase the production of switches. With a consolidated commercial network in Italy and abroad and always ready to catch the market innovation, S.L.I.M. started integrating the LED technology in the production of indicators already in 2000.

Nowadays we are preparing for future challenges, on the basis of our 45-year-long experience! We are ready to face the challenges of the global market with the same passion that characterized the birth of our company.



**Pierluigi Cattani**  
General Director & President



**Raffaella Zambellini**  
Administrative Director



**Matteo Cattani**  
Quality Director

# Management

## 2 generations of continuity

S.L.I.M. has now reached the second generation, this guarantees continuity and assures the ability to face our reference markets through a more-than-45-year-long journey. Tradition and dedication are the founding partners' values, which today are being carried on with the same passion by the second generation, that is looking forward to the future with the awareness of an important historical legacy, as well as with a clearer view on new technologies.

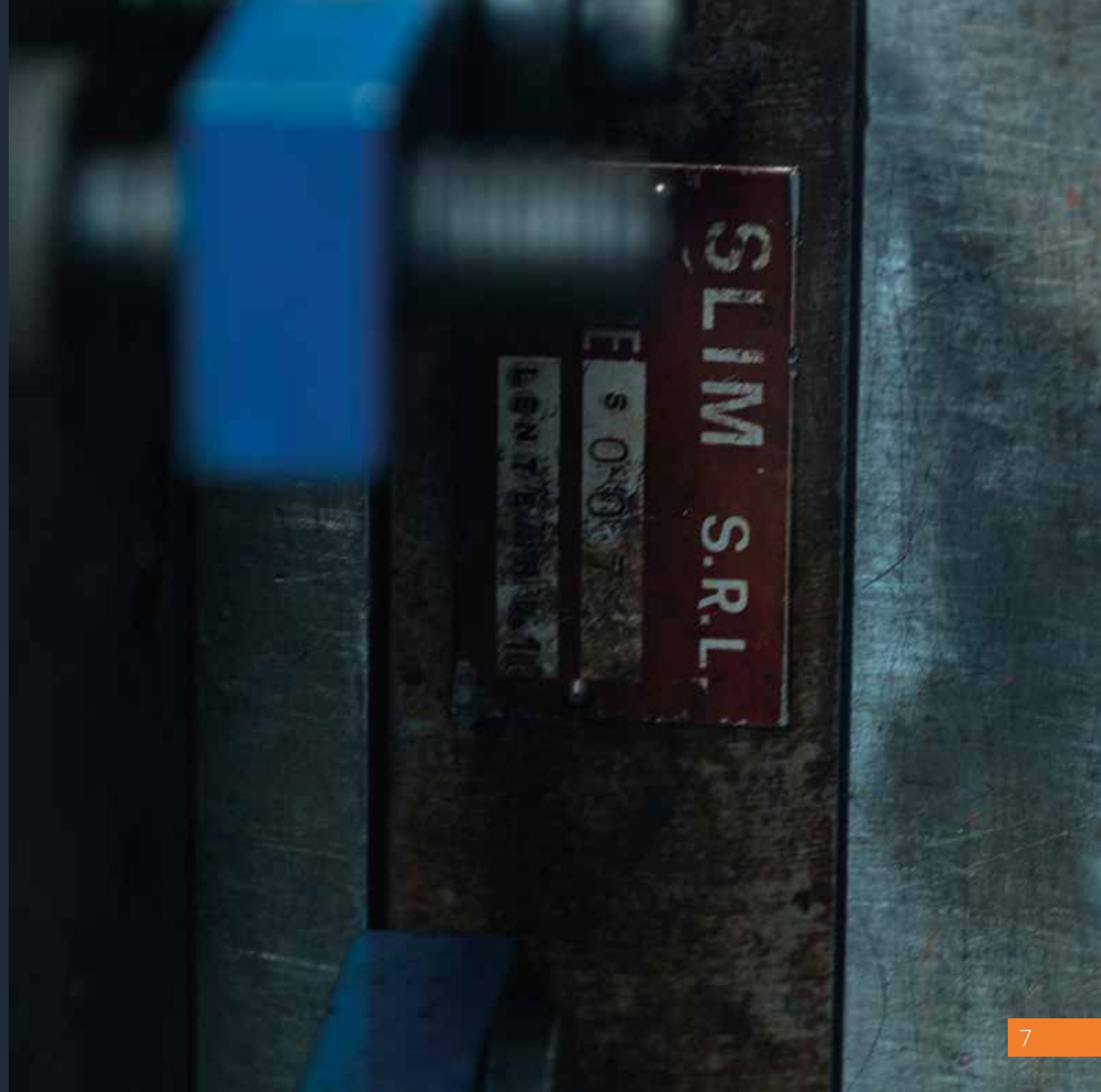
*"Our Company is experiencing today an important moment of renewal. We are getting ready to face new challenges, supported by a story that made us determined and prepared."*

# The generational handover and the new organization

## Inheriting the past, making good use of it and building the future

“We are ready to face the future with dynamism and passion with lessons learned from the past.”

“We want our co-operators to share our dynamism, essential characteristic to face today's market. We foster initiative and autonomy and try to actively involve everybody in a responsible way in the daily activities at all levels. Making everyone aware of the company and market dynamics will help us grow and improve every day more.”





# Mission

## We give light to ideas

Our mission consists in grasping, interpreting and satisfying our target's requirements, accompanying the development of your ideas with our lighting solutions.

In a world that is constantly searching for progress SLIM represents an industry benchmark, where the customer's project is central.

# Vision

Lighting in its many uses can improve people's quality of living. This is why we combine our best competencies and the most innovative technology to develop cutting edge lighting solutions, that benefit from project know-how, manufacturing flexibility and speed of implementation.

# Values

**Simple** - Lighting solutions emerge from thorough analysis and constant planning, that lead us to improve every day, in order to supply products that are easy to use. Simplicity is a value that also characterizes us in our relationship with others.

**Smart** - Ready for change and open to innovation, we provide lighting solutions focused on new technology and new functional scenarios.

**Human-Centered** - Project planning centered on our ability to create and maintain long term relationships with our different stakeholders, who thus become consolidated partners in providing new lighting solutions to the marketplace.







[www.slim.it/future](http://www.slim.it/future)

# Future

**The future has already started,  
do you want to see it?**

The first neon indicators have been surpassed by the LED ones, a continuously evolving technology that opens new scenarios. However, the technological development of the past decade, allows today innovative solutions and a new point of view on the market, allowing us to look forward.

Our society changes, and so does the design and the development of our products. So, we are continuously changing as well. And we are always looking for new systems that consent the lightning of always wider surfaces or featuring a complex geometry, or having more and more narrow spaces.

Ready and open to innovation, our investments are aimed at optimizing the company processes and strengthening the search and development of new lightning technologies.



# Quality

## Thinking outside the box for a better understanding

From our point of view, quality means assuring the repeatability of the realized product. This quality consistency can be achieved only through a thorough control throughout all the production phases. We adhere to the Certification ISO 9001: 2015 and to the highest control and audit standards for all our production. Procedures, operating instructions, parameters and the whole production system has been modified for more than 40 years. All our products are manufactured in full compliance with the international regulations (RoHS, REACH) and are approved and validated by important certifying authorities such as VDE, UL-CSA, ENEC e IMQ.

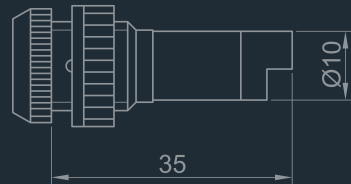
The quality of our solutions is not guaranteed only by the certifications, it arises as well from the steady and concrete commitment that lead us to develop long lasting products, orienting our customers towards the best solution for them.



[www.slim.it/quality](http://www.slim.it/quality)



# Quality means being resistant



## Research and development

### Learning, improving and developing the future

Being sensitive to our customers' requests, we improve and suggests more and more efficient solutions every day. The deep experience gained over the years allows us to promptly tackle the submitted requests.

Our R&D department has gained modern and high-performing tools in its growth, which allows our company to actively cooperate with our customers to the development of new products and solutions. The abilities, increased over the years, let us achieve tailor made solutions, with the aim of supplying the most suitable solution to the required need.

## Technology

### New solutions for the creation of prototypes and for production

We are constantly investing in new systems for a better management of all the production cycle and the R&D activities. The use of 3D printers in stereolithography allows us to largely increase the creation of prototypes, while the implementation of numerically controlled equipment makes our production even more flexible and efficient, making the service offered to the customer all-round better.



[www.slim.it/research-and-development](http://www.slim.it/research-and-development)



## Step 1

### Moulding

13 moulding presses manufacture all the plastics component used in our range of products.

## Step 2

### Seaming and welding

Components undergo the first phases of the production process.

## Step 3

### Assembly

In this phase, the experience gained over the years by our operators is fundamental. The good outcome of the finished item depends mainly on this.

## Step 4

### Testing

Essential part of the production process, it is the guarantee on our products. Our distinctive characteristics that makes us different from other company on the market for quality and result reliability.

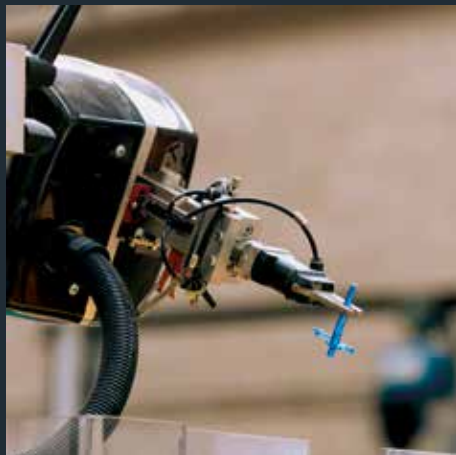


# The production system

## The beating heart of our company

Speed, flexibility, fast response time, production of small and big quantities, quick delivery timing. Our production system is a tested mechanism supported by long lasting experience, qualified personnel, technical instruments suitable to assure high efficiency standards, to which our customers are accustomed.

From seaming to welding, from assembling to testing, the production system at S.L.I.M. is the result of all the efforts we put every day into being more and more efficient and improving the quality of our products.



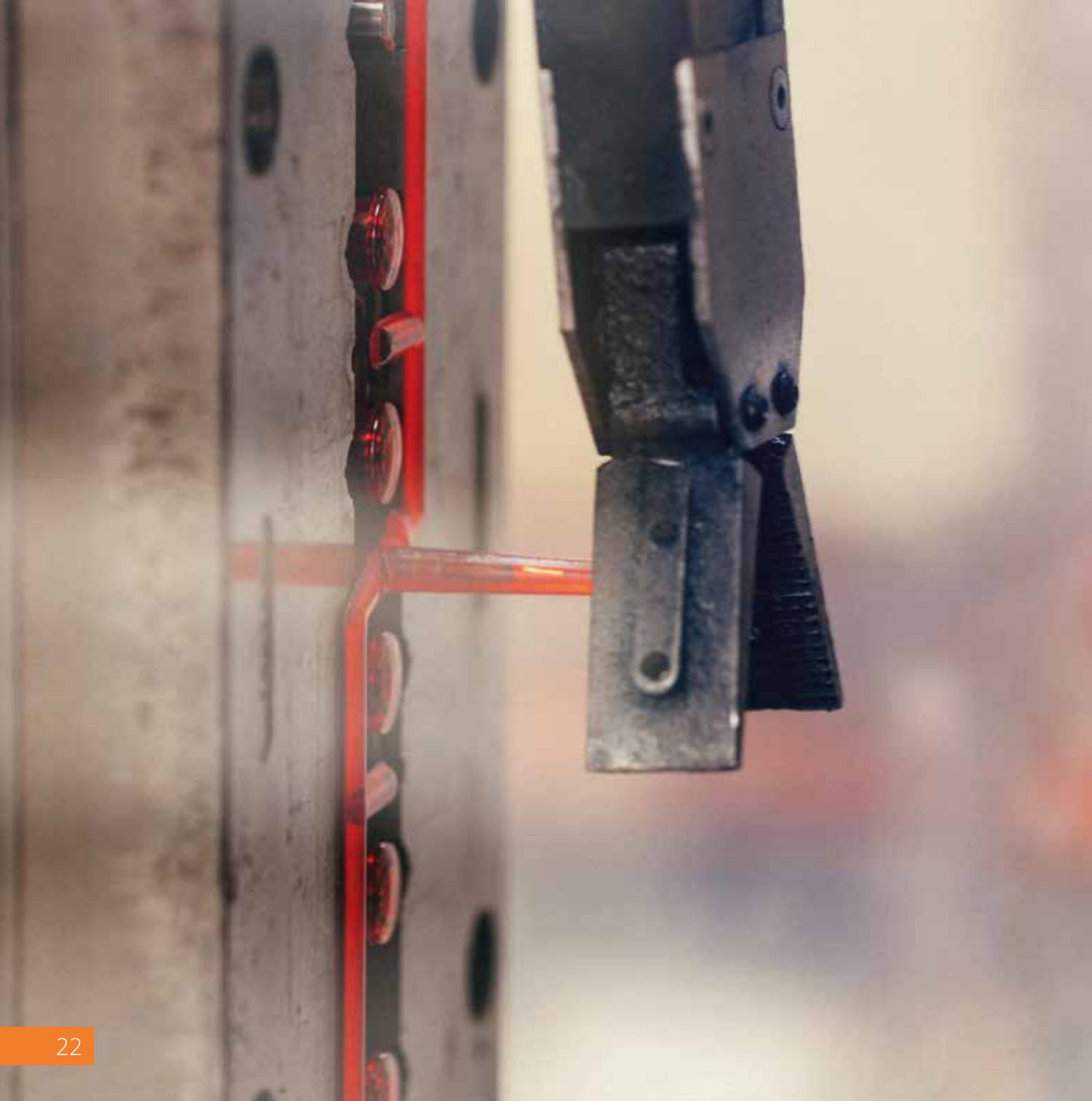




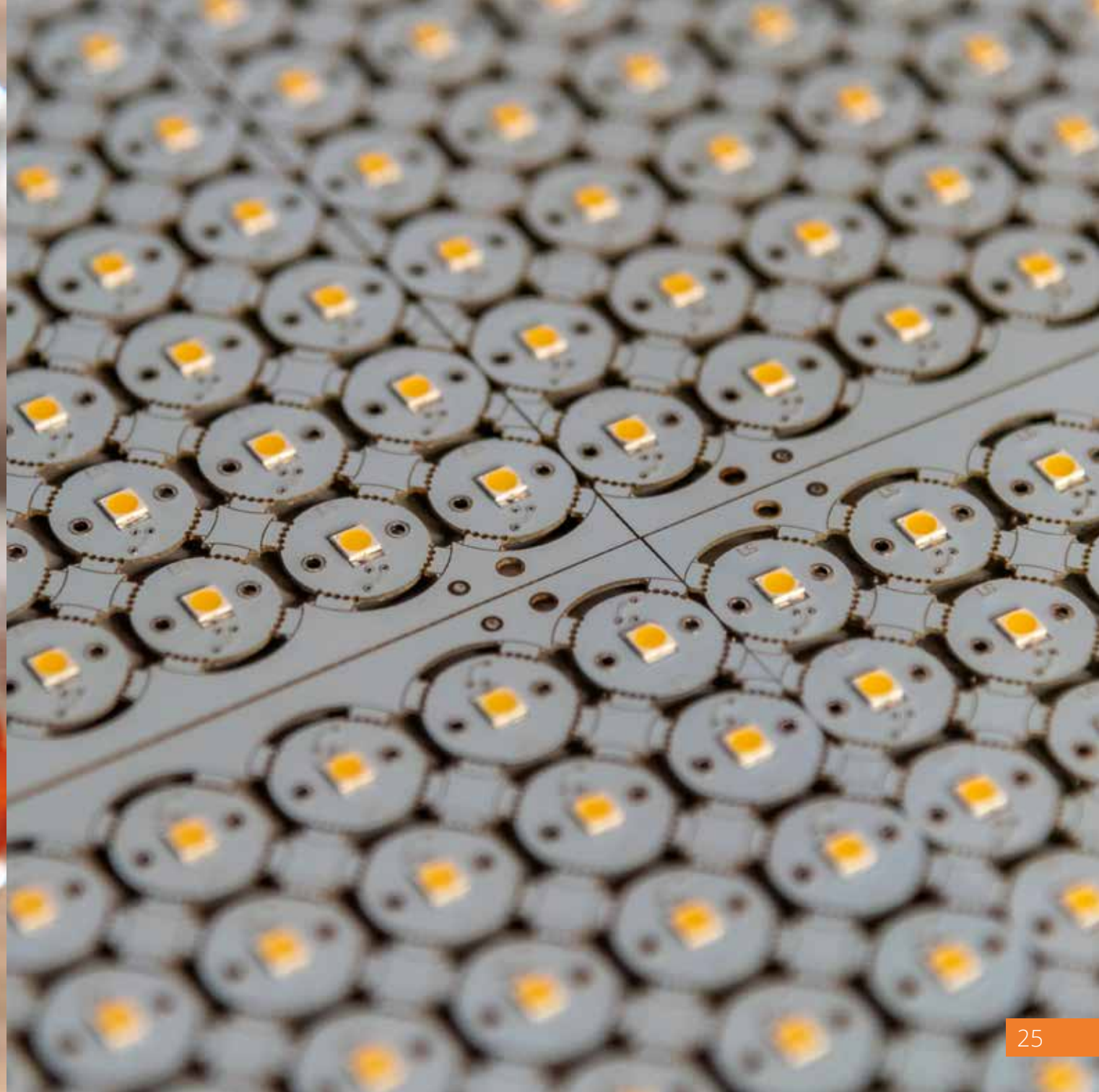
# Monitoring on all the steps

## Organized to follow all the production line

The production process does not finish within the company. It starts from an idea and finished with the delivery, through the respect of all the required quality standards. We work together with consolidated, trained and certified partners. The whole line is, in this way, controlled to guarantee the S.L.I.M. quality standard that means a product of quality and respect of the delivery timing.











# Ethics & Environment

## **Respect for the environment and attention to details**

We strictly stick to Directive 2011/65/UE (RoHS II) and European Regulation N. 1907/2006 (REACH) on environmental subjects.

In 2012 we installed a photovoltaic plant for the generation of electrical power, exactly because we believe in a sustainable future.

Safety is for us a fundamental value: we are very careful towards the environmental conditions in which our personnel work and we regularly make improving interventions on them. We consider our company as our family: paying attention to its components' safety and health is a daily activity.





## Home Appliances

Washing machines, dish-washers, ovens, microwave ovens, refrigerators, coffee machines., industrial kitchens: our indicators can be applied in all, small and big, home and professional appliances.

## Lighting

Lighting technique, domotics and control panels. Indicators play a role where it is necessary to control the light. Here the challenge is being able to find solutions in smaller and smaller spaces with more and more performing lighting.

## HVAC

Light indicators play an important role also in the sectors of heating, ventilation and air conditioning systems.

## Automotive

The automotive sector is the most interesting one for the LED indicator technology, a really wide application field, where also our indicator play an important role.

# Applications

**From washing machines to sockets,  
our products light up all sectors**

Our light indicators are suitable components for different market sectors: from electrical home appliances (washing machines, tv, ovens and refrigerators) to Ho.Re.Ca. sector (kitchens and industrial catering, coffee machines...), from the lighting technique to domotics, through the medical sector, from HVAC to automotive.

The LED technology goes together with the by now consolidated neon solution and explores new scenarios, such as the optical fibre and other types of lighting.

Whenever a light spot is needed in a tight space, we are the ones for you.

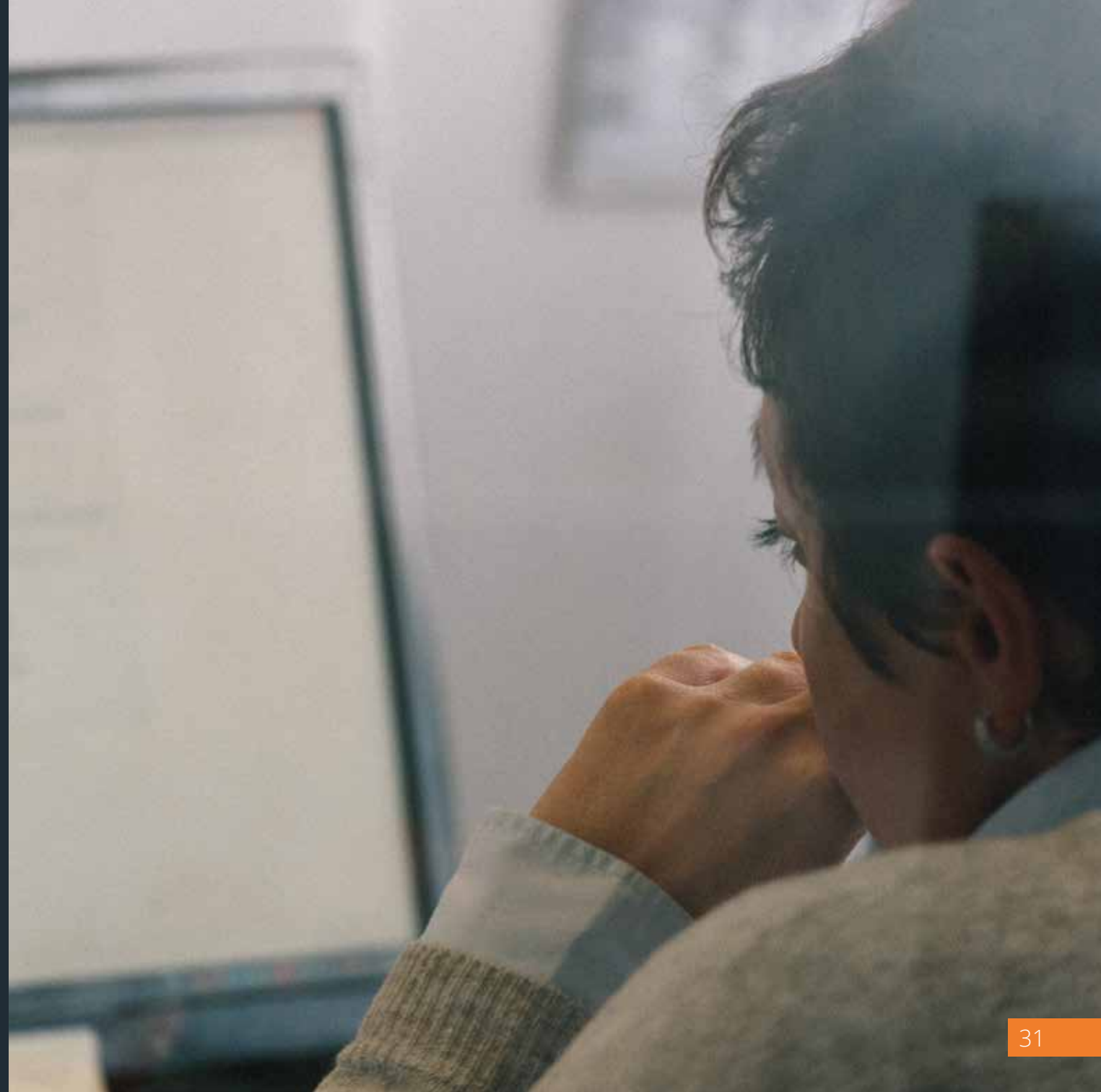
# Customers support

## Speed and support to customer, our daily routine at work

Quick and qualified answers to requests coming from all over the world, this is our customer support.

Already during our first contact with the customer, we strive to give our support, answering pertinently in short time. Our staff is organised and competent, today 95% of the incoming requests are answered within 48 hours. The customer is a real value for us; customer support, so, is for us a major goal: we follow our customers kindly and competently from the first contact to the long-lasting consolidated partnership.

We strive to anticipate our customers' requests, also through a highly oriented problem-solving approach. We face and solve problems, supporting our customers worldwide, both in developing customized solutions and supplying standard products.





**[www.slim.it](http://www.slim.it)**