

VANDAL-PROOF LIGHT INDICATORS

High-performance indicators resistant to mechanical and chemical stress conditions



Starting from standard light indicators, SLIM has developed **three models of vandal-proof indicators**, which are **more performing against impacts and some invasive and corrosive cleaning substances**.

Due to the special structure, the vandal-proof indicator is ideal to be inserted in all this equipment which is in daily contact with water, cleaners and dust: for instance equipment for professional catering kitchens.

Following some requests that came from both the domestic and foreign market, the technicians and the engineers of the R&D department realized a **nickel-plated version** and a **polished chrome-plated brass version**. The two different variants give the product a unique aesthetic, making the models of signallers suitable to be installed in different devices.

Customers can choose the configuration they prefer by customizing the color of the lens and the type of panel connection.

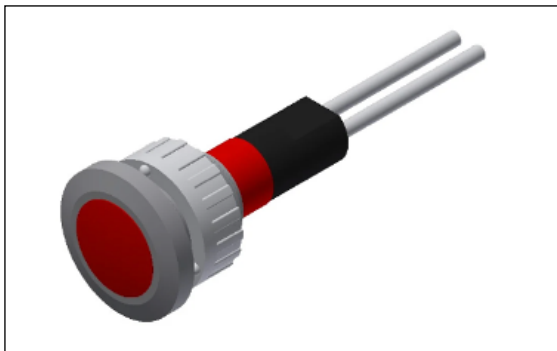
CHARACTERISTICS

- Chrome-plated brass body or nickel-plated version.
- Metal head.
- First o-ring placed between the central white diffuser and the metal body.
- Second o-ring placed between the panel hole and the metal head.
- IP65 protection degree from the front of the panel.
- VDE, UL / CSA certified indicators for the European and North American market.

APPLICATIONS

- **Professional and industrial kitchen equipment** including cooking systems, refrigeration systems, washing machines and glasswashers.
- Small and large **household appliances**.
- **Electromedical equipment** and devices for the medical sector.

Technical specifications



TB/010 model

Lamps

Working voltage

Working temperature

Hole dimensions

Type of connection

Lens color



Incandescent, neon/fluoro, LED

From 2V to 400V

90°C Max - 120°C Max - 150°C Max

10mm

PVC cable - silicone cable - silicone-glass cable

Transparent, red, orange, green, blue, opal white



TB/012 model

Lamps

Working voltage

Working temperature

Hole dimensions

Type of connection

Lens color



Incandescent, neon/fluoro, LED

From 2V to 400V

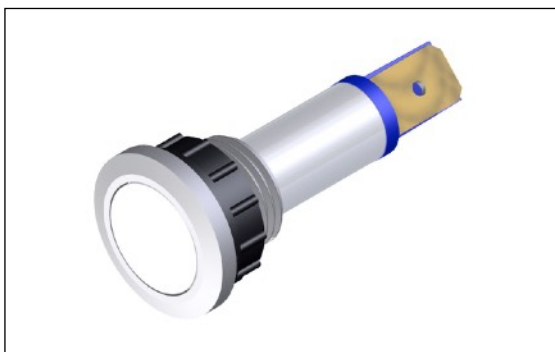
90°C Max - 120°C Max - 150°C Max

12mm

PVC cable - silicone cable - silicone-glass cable

Transparent, red, orange, green, blue, opal white

Technical specifications



TBF/012 model

Lamps

Working voltage

Working temperature

Hole dimensions

Type of connection

Lens color

Incandescent, neon/fluoro, LED

From 2V to 400V

120°C Max - 150°C Max

12mm

Faston 6,3x0,8mm - faston 4,8x0,8mm

Transparent, red, orange, green, blue, opal white

The advantages of this solution

- **mechanical and chemical resistance;**
- **dust and wear resistance** over time;
- **strength of the components;**
- greater safety **features;**
- higher **industrial reliability;**
- high **luminous efficiency** in the LED version;
- possibility of **customization** according to customer requirements.

