

MICRO-LED SPOTLIGHT AT HIGH LIGHT INTENSITY

New lighting systems to add value in terms of design and efficiency to food-equipment and vending machines



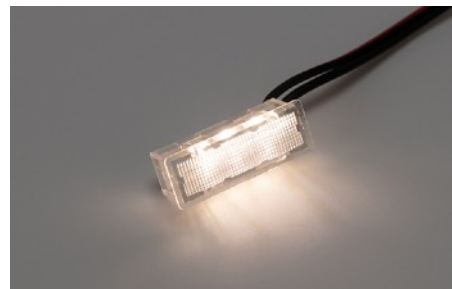
Starting from standard light indicators, SLIM has developed some **models of LED light indicators at high light intensity. The micro-LED spotlights have a real function of lighting**, and they are ideal to be integrated into dispensing devices such as coffee machine, juicer and water dispenser. The micro-LED spotlight lights up the worktop and focus the attention on the beverage preparation, enhancing the chromatic perception.

According to the latest trends in interior design, the LED becomes the protagonist of the restyling of different food-equipment and household appliances.

For these new types of working devices, in the version with 230V power, it was chosen an **SMD LED** that allowed to use a condenser of small size, in terms of overall dimensions.

The LED operates at full power and the light is such that it visibly illuminates the required area under every condition.

Using a lux meter, we found that the brightness provided by the new light indicator is more than ten times higher than the one provided by a standard LED light operating at full power.



Technical specifications



TB/012/CSK model

Drilling hole

12mm

Terminals

Cables

Working voltage

12-230V

Lamps

LED SMD

Lens

CSK



TB/012/SDK model

Drilling hole

12mm

Terminals

Cables

Working voltage

12V AC/DC

Lamps

LED SMD

Lens

SDK



TBF/012/SDK model

Drilling hole

12mm

Terminals

Faston 6,3x0,8mm

Working voltage

12V AC/DC

Lamps

LED SMD

Lens

SDK

Technical specifications



TB/012/SDY model

Drilling hole

12mm

Terminals

Cables

Working voltage

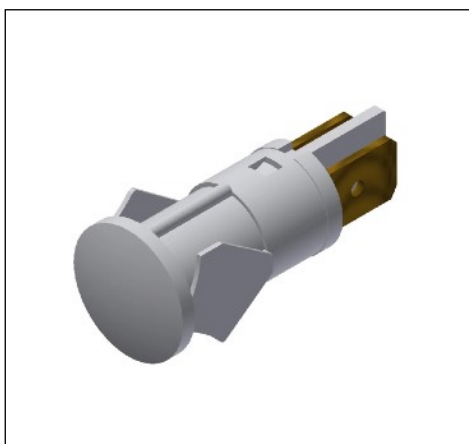
12V AC/DC

Lamps

LED SMD

Lens

SDY



TBF/012/SDY model

Drilling hole

12mm

Terminals

Faston 6,3x0,8mm

Working voltage

12V AC/DC

Lamps

LED SMD

Lens

SDY



TB/013/SFK model

Drilling hole

13mm

Terminals

Cables

Working voltage

12V AC/DC

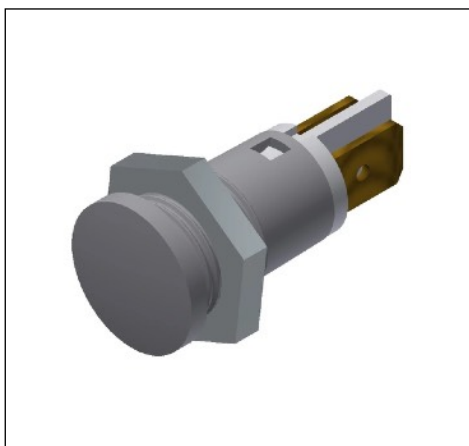
Lamps

LED SMD

Lens

SFK

Technical specifications



TBF/013/SFK model

Drilling hole

13mm

Terminals

Faston 6,3x0,8mm

Working voltage

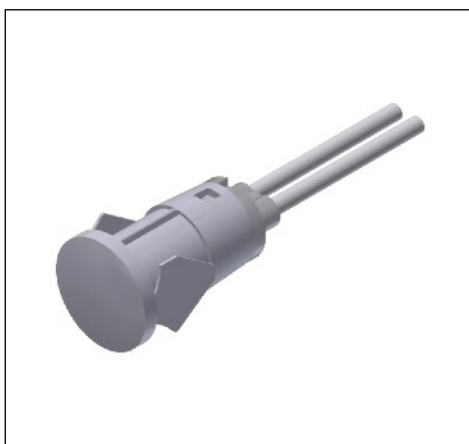
12V AC/DC

Lamps

LED SMD

Lens

SFK



TB/013/SFY model

Drilling hole

13mm

Terminals

Cables

Working voltage

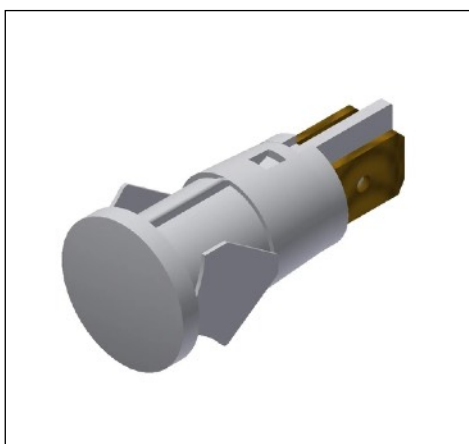
12V AC/DC

Lamps

LED SMD

Lens

SFY



TBF/013/SFY model

Drilling hole

13mm

Terminals

Faston 6,3x0,8mm

Working voltage

12V AC/DC

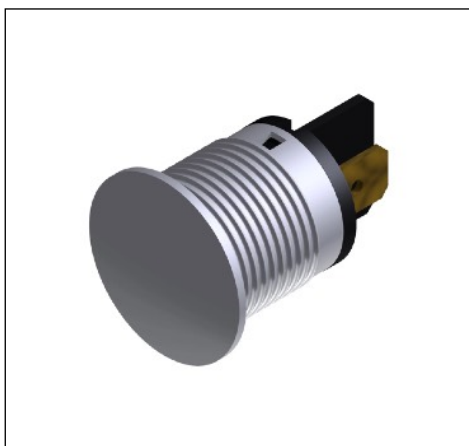
Lamps

LED SMD

Lens

SFY

Technical specifications



TBF/018/CFK model

Drilling hole

18mm

Terminals

Faston 6,3x0,8mm

Working voltage

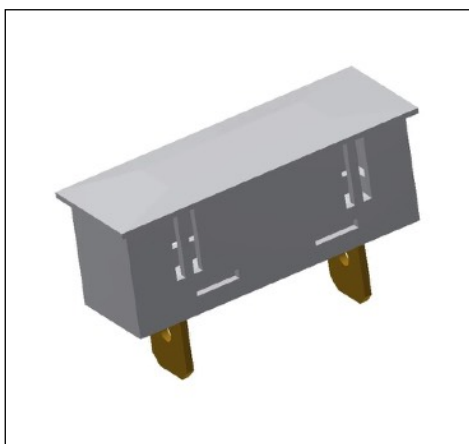
12-230V

Lamps

LED SMD

Lens

CFK



UR/L model

Drilling hole

34,2mm x 10,5mm

Terminals

Faston 6,3x0,8mm

Working voltage

12V AC/DC

Lamps

LED SMD

The advantages of this solution

- **high** luminous **efficiency**;
- **low** energy **consumption**;
- greater **safety of the device** which has a low voltage;
- **low working temperature of** the circuit, which prevents overheating of the final application;
- **Made in Italy** technology;
- possibility of **customization** according to customer requirements.

