



 **emu** 70°

TEXTILE COLLECTION 2021

 **emu** 70°



Gli arredi EMU sono il risultato di un lungo percorso fatto di attenzione alla qualità, forte identità, innovazione e scrupoloso rispetto per l'ambiente. Arredi senza tempo, in cui funzionalità e valore estetico si equivalgono.

E' con questa ispirazione che EMU lancia nel 2021 la sua prima collezione tessile, composta da una vasta gamma di tessuti suddivisi in basic, standard e premium. Un progetto trasversale che parte da trame prodotte esclusivamente per EMU, da cui sono nati 10 mood estremamente ricchi di abbinamenti. Trame preziose e cromatismi fatti di toni polverosi, pattern leggeri e fantasie delicate facilmente interscambiabili, ispirati al tema del viaggio tra alcune delle più affascinanti isole dei mari italiani. Ne nascono atmosfere sofisticate che accompagnano gli arredi EMU in un percorso mentale di 10 tappe che hanno suggerito le nuove palette.

Mai viaggiare è stato così elegante e confortevole!

EMU furnitures are the result of a long path made of attention to quality, strong identity, innovation and scrupulous environment respect. Timeless furnishings, where functionality and aesthetic value are equal.

It is with this inspiration that EMU launches its first textile collection in 2021, consisting of a wide range of fabrics divided into basic, standard and premium. A transversal project that starts from wefts exclusively produced for EMU, from which 10 moods, extremely rich in combinations, were born. Lavish textures and chromatisms made of powdery tones, light patterns and delicate design, easily interchangeable and inspired by the theme of travel among some of the most fascinating islands of the Italian seas.

The result is sophisticated atmospheres that lead the EMU furnishings in a mental journey of 10 stages that inspired the new palettes.

Travel has never been so elegant and comfortable!

CAPRERA FILICUDI LINOSA ISCHIA PANTELLERIA
SALINA VULCANO SPARGI PANAREA ELBA

CAPRERA

*Nelle sfumature azzurre e turchesi del
Mar Mediterraneo si specchia l'Isola del Vento.*

*In the blue and turquoise nuances of the
Mediterranean Sea is reflected the Island of the Wind.*







Cannolè
design Cristell - Gargano

Fabrics

600/17 Celeste / *Baby blue*

600/18 Brezza / *Fresh air*

600/19 Polo righe / *Polo stripes*

900/01 Cielo / *Sky*





FILICUDI

*La perfetta simbiosi tra terra e mare anima
i colori caldi e selvaggi dell'Isola delle Streghe.*

*From a perfect symbiosis between land and sea the warm
and wild colors of the Isle of Witches were born.*



Tami Bamboo
design Patrick Norguet

Fabrics
600/07 Giallo / Yellow
600/28 Corallo / Coral
900/07 Avana / Chesnut
900/14 Candy





LINOSA

Isola d'Alto Mare splendida e selvaggia, nera di roccia lavica e sabbie di un bianco abbagliante.

A marvellous and wild High Seas Island, black lava rock and dazzling white sand.







Carousel
design Sebastian Herkner

Fabrics
600/06 Islanda / Iceland
600/15 Madreperla chiaro / Light nacre
600/16 Betulla d'argento / Silver birch
900/18 Madreperla / Nacre





ISCHIA

*La luce non trova barriere e si respira libertà,
avvolti dai profumi autentici della natura.
The light finds no barriers and you can breathe freedom,
wrapped in the authentic scents of nature.*





Como
design Angeletti - Ruzza

Fabrics
600/22 Baia celeste / *Sea foam*
600/25 Righe lavanda / *Lavender stripes*
600/26 Pervinca / *Periwinkle*
600/28 Corallo / *Coral*
900/14 Candy



PANTELLERIA

*Pianure interminabili di roccia vulcanica, mare immobile,
case dipinte a toni caldi, odore di autenticità.*

*Endless plains of volcanic rock, still sea, houses painted
in warm tones, the smell of authenticity.*





Terramare
design Chiamonte - Marin

Fabrics

600/13 Arlecchino / Harlequin

600/14 Scacchi arancione / Orange burnt

900/05 Nero / Black

900/13 Salmone / Salmon

900/71 Bianco trama stretta / Small weft white





SALINA

*Scura di pietra lavica in cui la natura si mostra divina,
piccole baie che si aprono su un mare celeste.*

*Dark lava stone where nature shows its divinity,
small bays that open onto a celestial sea.*





Como
design Angeletti - Ruzza

Fabrics
900/01 Cielo / Sky
900/16 Assenzio / Green fairy





VULCANO

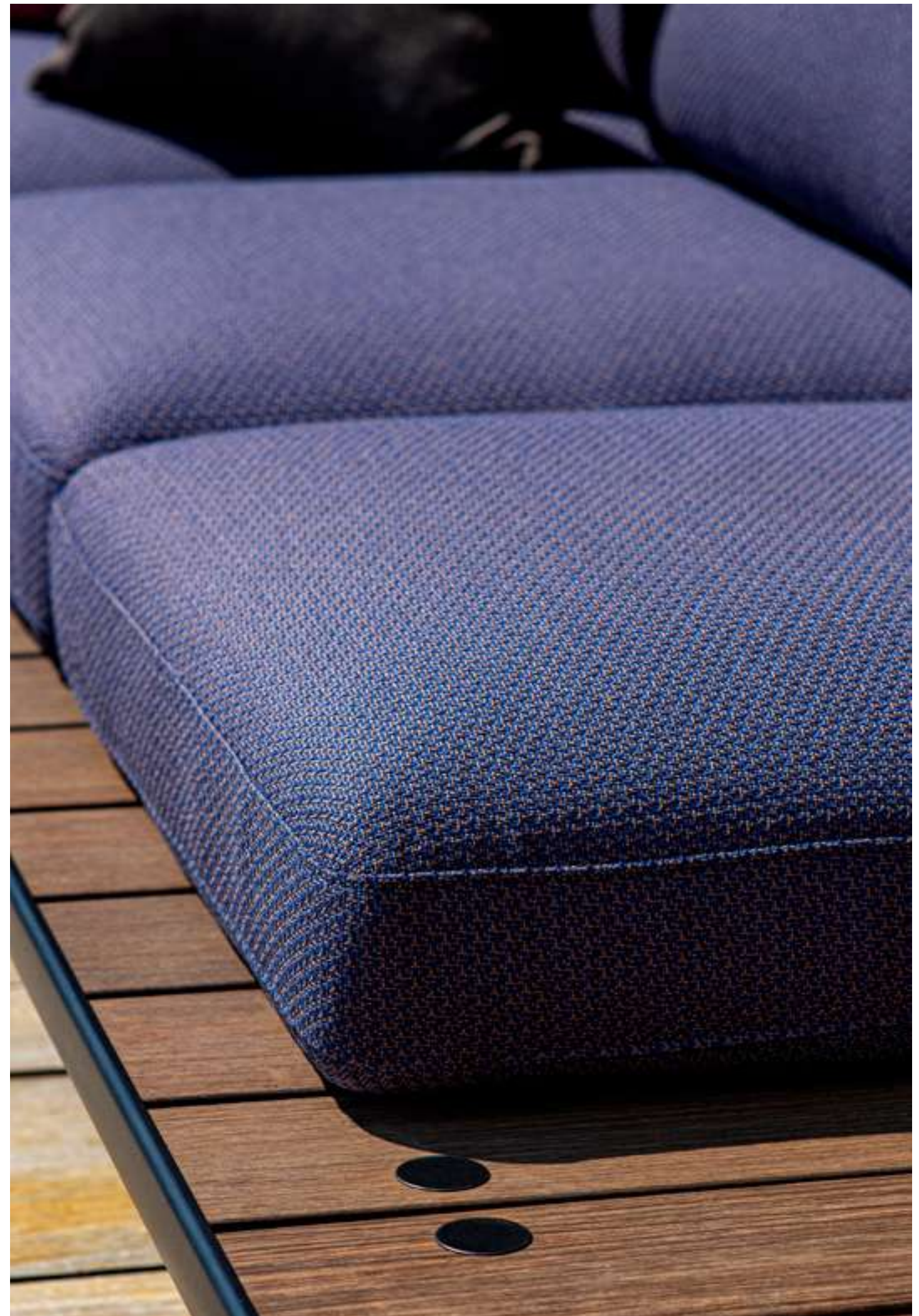
*Dalle profondità del cratere, la lava dai colori caldi
sovrasta una terra dal ventre sempre vivo.
From the depths of the crater, the lava warm colours
dominate a land with an always alive belly.*





Tami Bamboo
design Patrick Norguet

Fabrics
600/24 Blu crochet / *Crochet blue*
600/27 Lampone / *Raspberry*
900/06 Bronzo / *Bronze*





SPARGI

*La bellezza di una terra a picco sul mare
mimetizzata tra enormi rocce granitiche e folta macchia.*

*The beauty of a land overlooking the sea
camouflaged among huge granite rocks and thick wood.*





Cross
design Rodolfo Dordoni

- Fabrics
600/09 Cachi / Kaki
600/10 Baia verde / Green bay
600/11 Honolulu
900/06 Bronzo / Bronze
900/79 Blu trama stretta / Small weft blue



PANAREA

Sorta dagli abissi di un mare azzurro e cristallino, la più antica delle Isole Eolie sfoggia la sua accogliente eleganza.

Born from the depths of a blue and crystalline sea, the oldest of the Aeolian Islands flaunts its welcoming elegance.







Terramare
design Chiamonte - Marin

- Fabrics
600/01 Corsica
600/02 Esagono / Hexagon
600/21 Polvere / Powder
900/02 Mare / Sea





ELBA

*La natura capricciosa forgiò un'isola dal grande fascino contemporaneo e dalle mille tonalità.
Capricious nature forged an island with great contemporary charm and a thousand nuances.*







Cannolè
design Cristell - Gargano

Fabrics
600/03 Maldive / *Maldives*
600/04 Ipnosi / *Hypnosis*
600/05 Scala di grigio / *Greyscale*
600/06 Islanda / *Iceland*
600/28 Corallo / *Coral*
900/05 Nero / *Black*





Tessuti Basic / *Basic fabrics*

EMU TEXTILE COLLECTION

TESSUTI BASIC / *BASIC FABRICS*

TESSUTI STANDARD / *STANDARD FABRICS*

TESSUTI PREMIUM A / *PREMIUM A FABRICS*

TESSUTI PREMIUM B / *PREMIUM B FABRICS*

TESSUTI PREMIUM C / *PREMIUM C FABRICS*

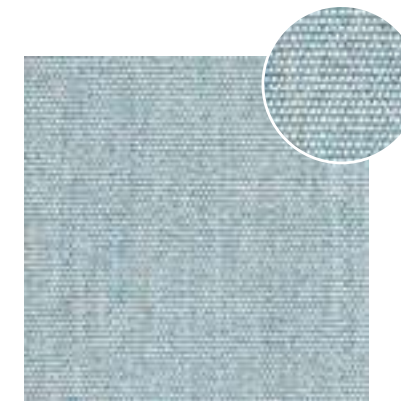
TESSUTI PREMIUM D / *PREMIUM D FABRICS*

MOOD

CAPRERA
FILICUDI
LINOSA
ISCHIA
PANTELLERIA
SALINA
VULCANO
SPARGI
PANAREA
ELBA



700/04 - ECRU



700/10 - AZZURRO
LIGHT BLUE



700/12 - BIANCO
WHITE

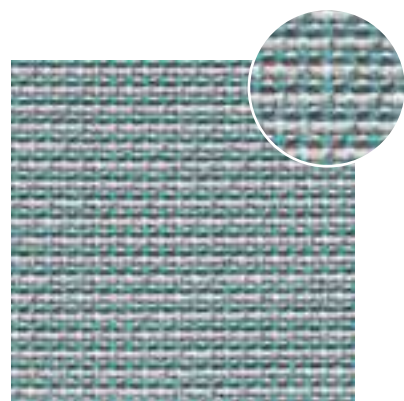


700/13 - GRIGIO CHIARO
LIGHT GREY

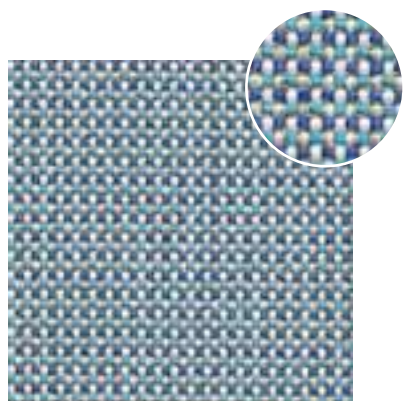


700/14 - GRIGIO SCURO
DARK GREY

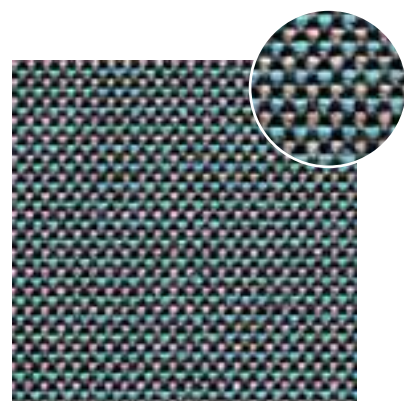
Tessuti Standard / *Standard fabrics*



900/01 - CIELO
SKY



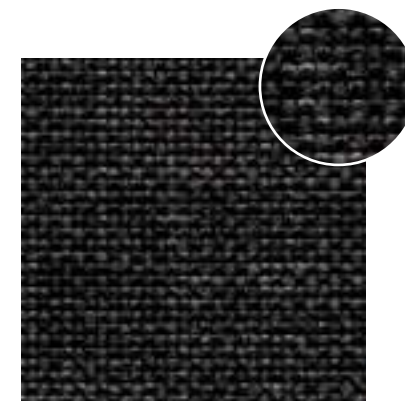
900/02 - MARE
SEA



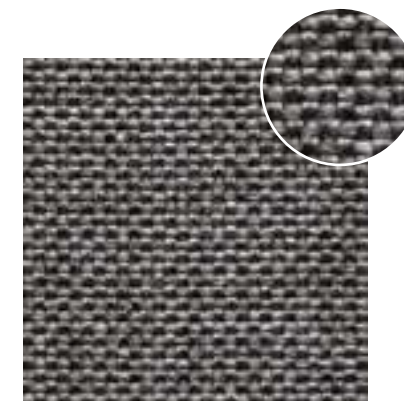
900/03 - NOTTE
NIGHT



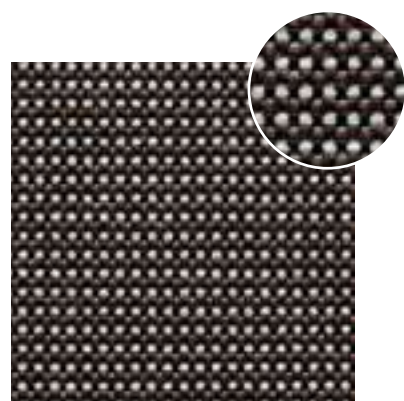
900/71 - BIANCO TRAMA STRETTA
SMALL WEFT WHITE



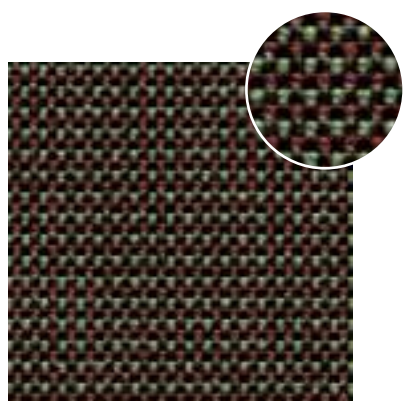
900/75 - MARRONE TRAMA STRETTA
SMALL WEFT BROWN



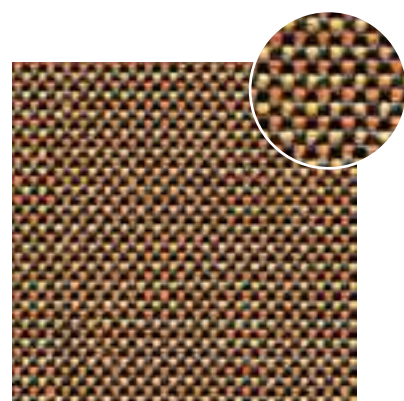
900/77 - GRIGIO TRAMA STRETTA
SMALL WEFT GREY



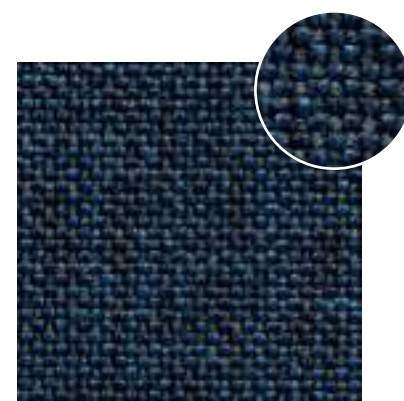
900/05 - NERO
BLACK



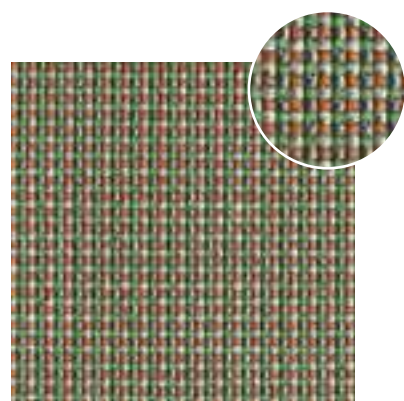
900/06 - BRONZO
BRONZE



900/07 - AVANA
CHESNUT



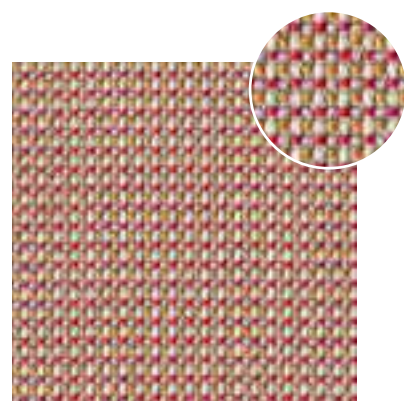
900/79 - BLU TRAMA STRETTA
SMALL WEFT BLUE



900/08 - SABBIA
SAND



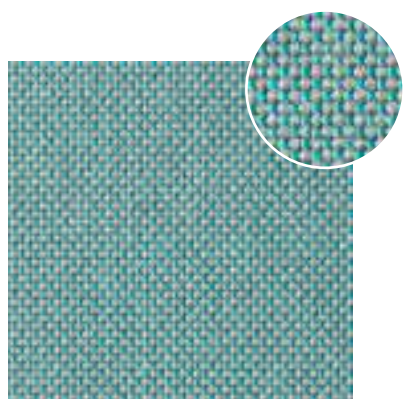
900/09 - SALVIA
SAGE



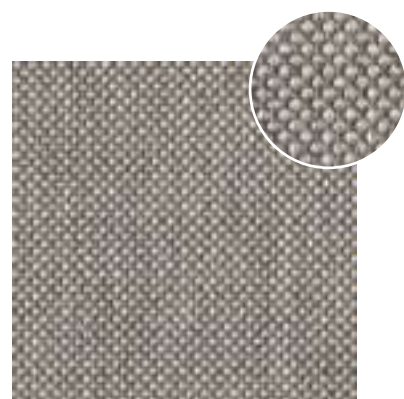
900/13 - SALMONE
SALMON



900/14 - CANDY

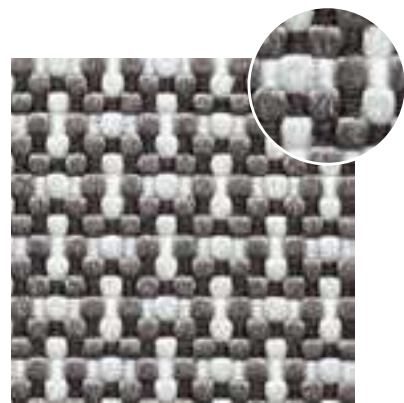


900/17 - PETROLIO
PETROLEUM

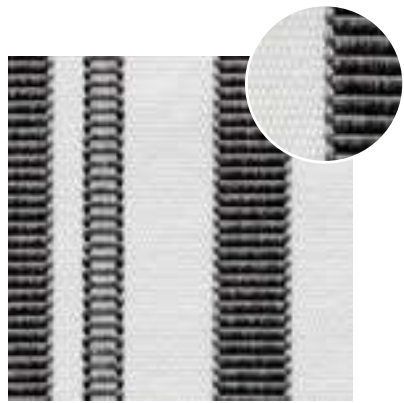


900/18 - MADREPERLA
NACRE

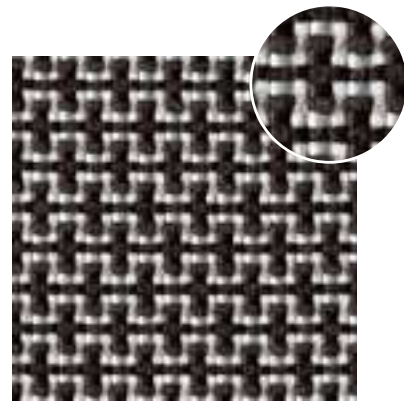
Tessuti Premium A / Premium A fabrics



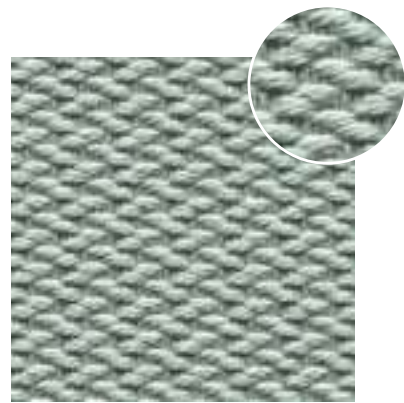
600/04 - IPNOSI
HYPNOSIS



600/05 - SCALA DI GRIGIO
GREYSCALE



600/06 - ISLANDA
ICELAND

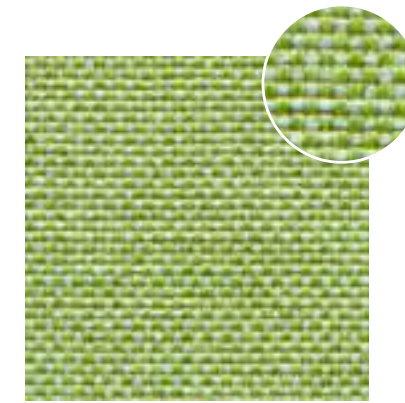


600/21 - POLVERE
POWDER

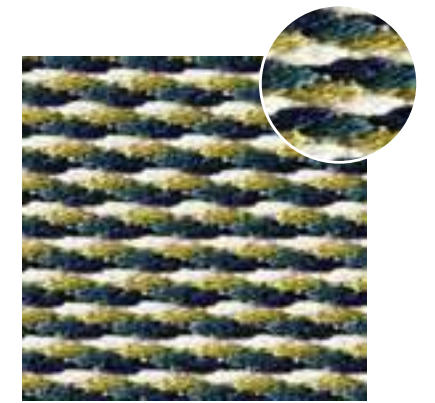
Tessuti Premium B / Premium B fabrics



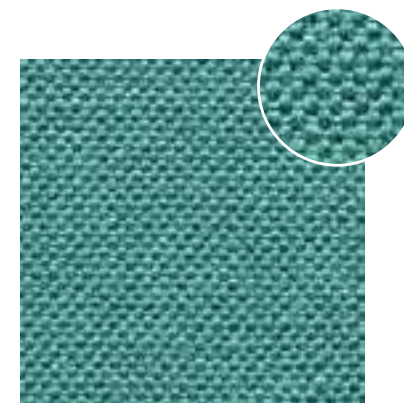
600/03 - MALDIVE
MALDIVES



600/10 - BAIA VERDE
GREEN BAY



600/11 - HONOLULU



600/12 - SMERALDO
EMERALD



600/22 - BAIA CELESTE
SEA FOAM

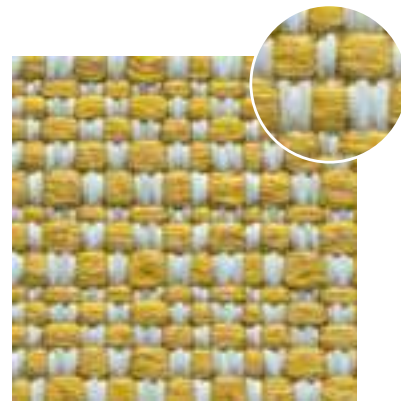
Tessuti Premium C / Premium C fabrics



600/01 - CORSICA



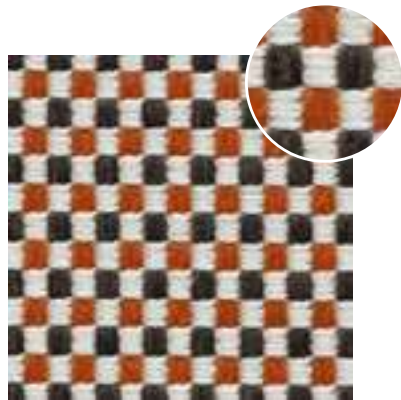
600/02 - ESAGONO
HEXAGON



600/07 - GIALLO
YELLOW



600/13 - ARLECCHINO
HARLEQUIN



600/14 - SCACCHI ARANCIONE
ORANGE BURNT

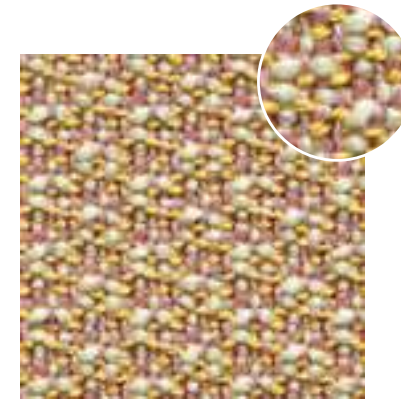


600/16 - BETULLA D'ARGENTO
SILVER BIRCH

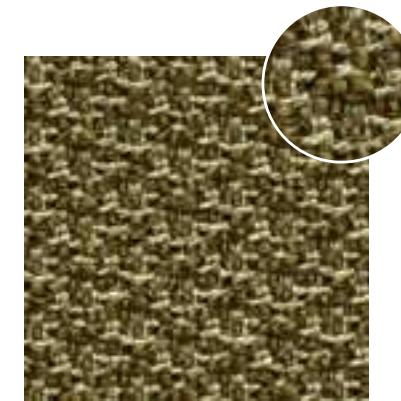


600/18 - BREZZA
FRESH AIR

Tessuti Premium D / Premium D fabrics



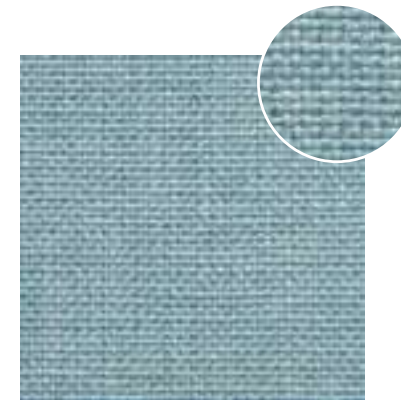
600/08 - GIALLO NAPOLI
YELLOW NAPLES



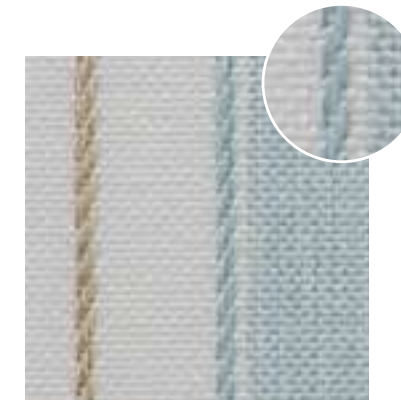
600/09 - CACHI
KAKI



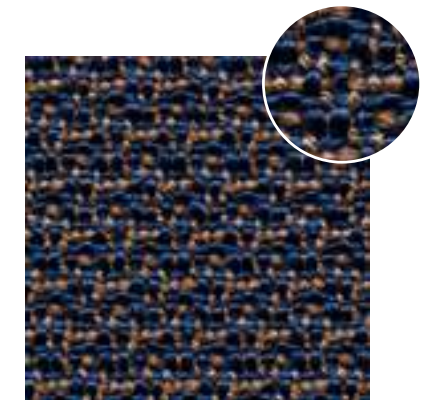
600/15 - MADREPERLA CHIARO
LIGHT NACRE



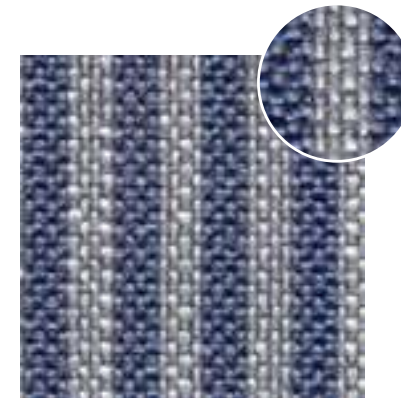
600/17 - CELESTE
BABY BLUE



600/19 - POLO RIGHE
POLO STRIPES



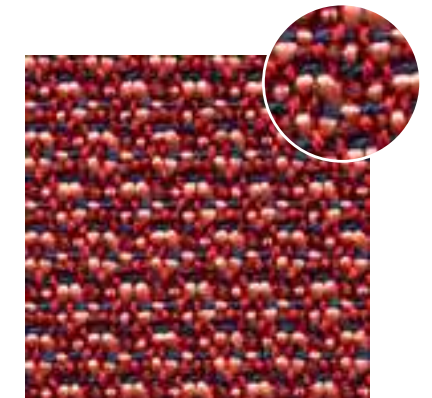
600/24 - BLU CROCHET
CROCHET BLUE



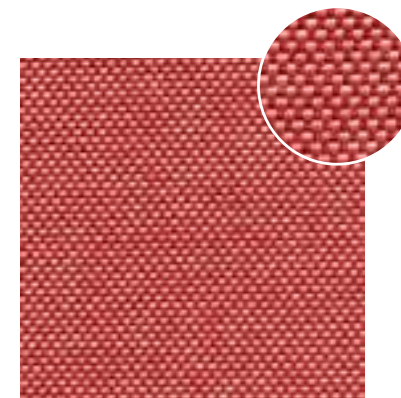
600/25 - RIGHE LAVANDA
LAVENDER STRIPES



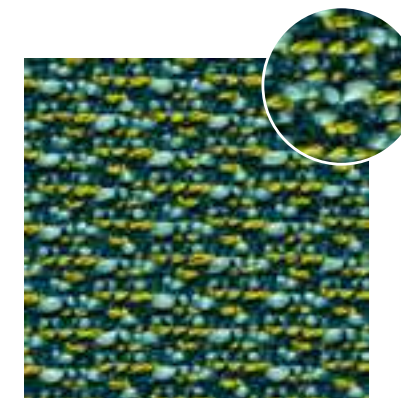
600/26 - PERVINCA
PERIWINKLE



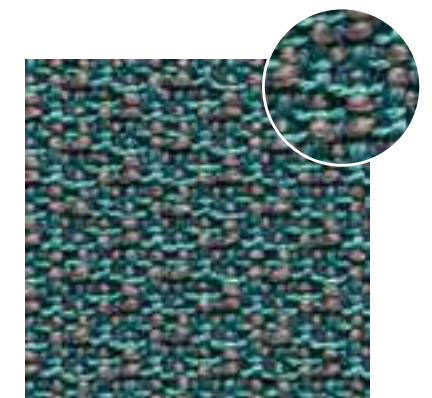
600/27 - LAMPONE
RASPBERRY



600/28 - CORALLO
CORAL



900/16 - ASSENZIO
GREEN FAIRY



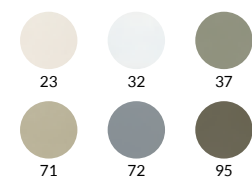
900/19 - PAVONE
PEACOCK

Mood

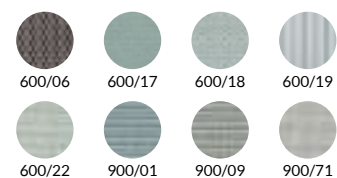
CAPRERA pag. 6



Struttura / Frame



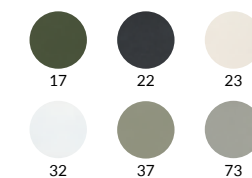
Tessuti / Fabrics



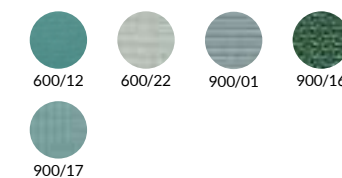
SALINA pag. 38



Struttura / Frame



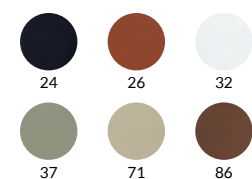
Tessuti / Fabrics



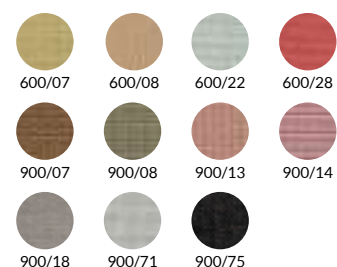
FILICUDI pag. 12



Struttura / Frame



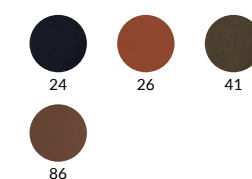
Tessuti / Fabrics



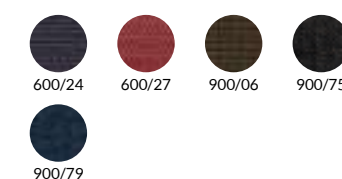
VULCANO pag. 44



Struttura / Frame



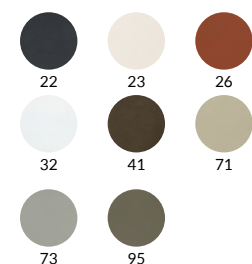
Tessuti / Fabrics



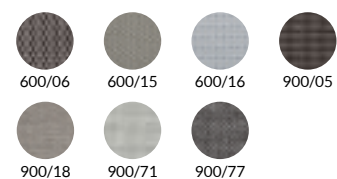
LINOSA pag. 20



Struttura / Frame



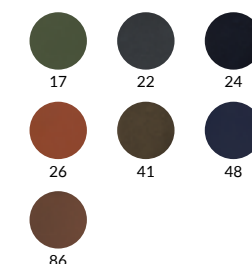
Tessuti / Fabrics



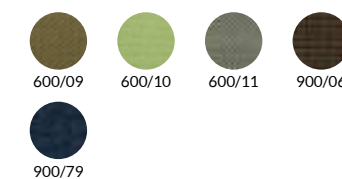
SPARGI pag. 50



Struttura / Frame



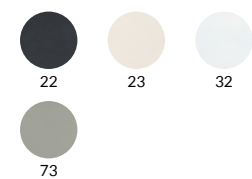
Tessuti / Fabrics



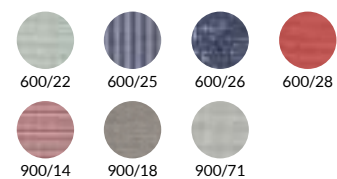
ISCHIA pag. 26



Struttura / Frame



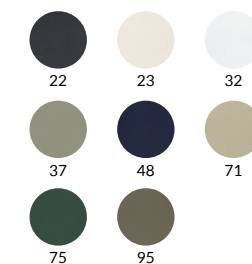
Tessuti / Fabrics



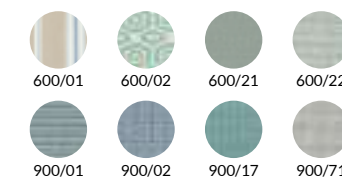
PANAREA pag. 56



Struttura / Frame



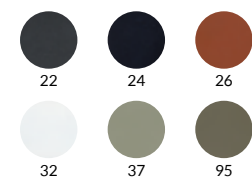
Tessuti / Fabrics



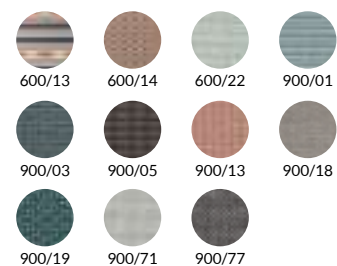
PANTELLERIA pag. 32



Struttura / Frame



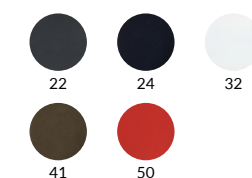
Tessuti / Fabrics



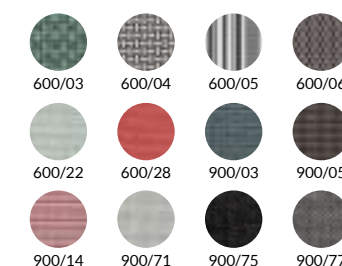
ELBA pag. 62



Struttura / Frame



Tessuti / Fabrics



concept / *concept*:
Studiopiù International

direzione artistica / *art direction*:
Floriana Micheloni

progetto grafico, redazione testi,
coordinamento / *graphic desing*,
text editing, supervision:
Studiopiù International

foto / *photos*:
Studiopiù International
Ettore Panichi

stampa / *printing*:
Graphic Masters

si ringrazia / *thanks to*:
Francesca Santambrogio
Altromodo Architects Napoli
Arch. Sebastiano Gorini

I prodotti illustrati sono soggetti ad una costante verifica dei particolari funzionali ed a una continua ricerca tecnologica sui trattamenti di finitura.

I prodotti rappresentati nella presente pubblicazione, nonché le descrizioni e le caratteristiche tecniche riportate, sono indicativi e possono essere soggetti a modifiche da parte di EMU Group S.p.A.

The products illustrated are subject to constant revisions in terms of their functional details and continuous research goes into the finishing treatments applied.

The products presented in this publication, as well as the descriptions and the specifications given are illustrative and are subject to change by EMU Group S.p.A.

Documento non contrattuale
Non-contractual document

EMU Group S.p.A.
MARSCIANO, PERUGIA, ITALIA / SETTEMBRE 2020
MARSCIANO, PERUGIA, ITALY / SEPTEMBER 2020



Organizzazione con Sistema di gestione qualità
certificato UNI EN ISO 9001:2015 da CSI Spa



Richiedi prodotti certificati FSC®
Look for our FSC® - certified products

