

A photograph of the Palacongressi Bellaria Igea Marina building at dusk. The building is a modern, multi-story structure with a prominent glass facade and a large entrance area. The sky is a deep blue, and the building's lights are on, creating a warm glow. Several flagpoles with flags are visible on the roof. A green arrow graphic points towards the building from the left side.

# Palacongressi

## Bellaria Igea Marina



Il centro del vostro business nel cuore della Riviera Romagnola. Ospitiamo i vostri successi, in pieno centro a Bellaria Igea Marina.

The heart of your business in the heart of the Romagna Riviera. We host your successes, in the city center of Bellaria Igea Marina.



# Livelli

## Levels

Ad ogni evento il suo livello: spazi modulari e planimetrie  
Each event has its own level: modular spaces and floor plans

-1

- Sala Aldebaran
- Sala Crystal
- Sala Pegaso
- Area Espositiva

0

- Sala Panzini
- Foyer
- Bar 1
- Bar 2
- Info Point

1

- Sala Sirio
- Sala Antares
- Sala Andromeda
- Ufficio Stampa

2

- Sala Panoramica



# Nice to meet you!



Posti  
Seats  
**2.500**

Area Expo m<sup>2</sup>  
Expo Area m<sup>2</sup>  
**4.800**

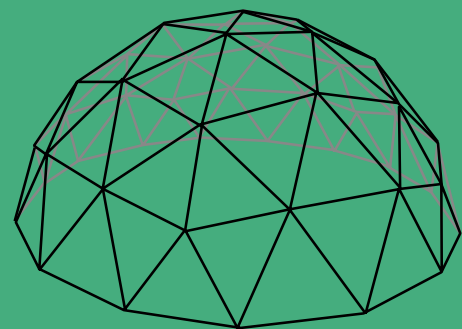
Area Parcheggio  
Parking Area

Sale  
Halls  
**10**

Livelli  
Livelli  
**4**

Walking distance dal centro e dagli alberghi  
Walking distance from city center and hotels





# LIVELLO ZERO

## Ground Floor

- Foyer
- Sala Plenaria A.Panzini
- Welcome area
- Nr 2 bar



A photograph of a stage event with an audience in the foreground and speakers on the stage. The background features large screens displaying various images.

SALA HALL	DIMENSIONI SIZE M <sup>2</sup>	PLATEA SEATS	WELCOME AREA
FOYER Foyer	437	150	INFO POINT
PLENARIA A.PANZINI Planary Hall Area	1260	1200	NR 2 BAR

# LIVELLO 1

## WORKSHOP AREA

### 1° Floor



- Sala Sirio
- Sala Antares
- Sala Andromeda
- Press Office



SALA HALL	DIMENSIONI M <sup>2</sup> SIZE M <sup>2</sup>	PLATEA SEATS	DIMENSIONI SIZE
ANDROMEDA	80	85	8X10 H3
ANTARES	77	80	7.7X10 H3
SIRIO	90	95	9X10 H3





# LIVELLO -1

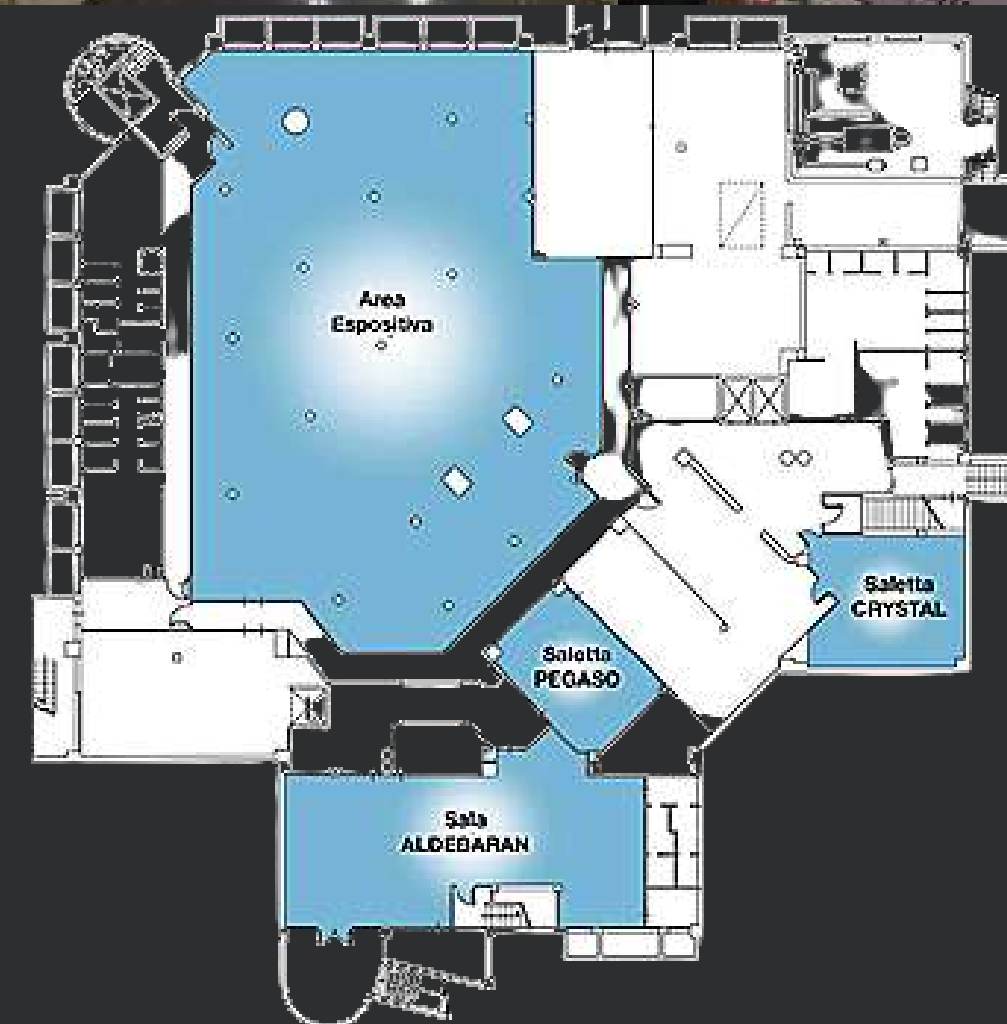
## WORKSHOP AREA

### -1 Floor

- Sala Aldebaran
- Sala Crystal
- Sala Pegaso
- Area Espositiva



SALA HALL	DIMENSIONI M <sup>2</sup> SIZE M <sup>2</sup>	PLATEA SEATS	DIMENSIONI SIZE
ALDEBARAN	182	130	8,80x20,70 H3
CRYSTAL	65	40	H3
PEGASO	53	-	H3
EXPO AREA	704	30	H3





# LIVELLO 2

## CATERING AREA

### 2° Floor

- Sala Panoramica



SALA HALL	DIMENSIONI M <sup>2</sup> SIZE M <sup>2</sup>	PLATEA SEATS	DIMENSIONI SIZE
PANORAMICA Panoramic	970	400	H 3,15

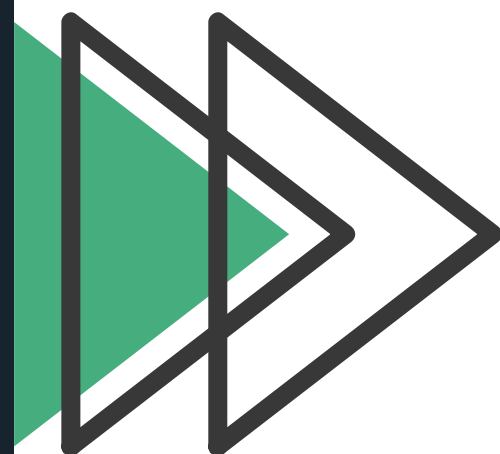
Cucina professionale, spazi dedicati alla ristorazione con ampie vetrate panoramiche, valorizzeranno ogni installazione.

Professional kitchen, spaces dedicated to catering with large panoramic windows, will enhance any installation.



Chi ci ha scelto

Who chose us






NOME SALA	LIVELLO	DIMENSIONI (m)	MQ	NUMERO POSTI MAX							LUCE NATURALE
				PLATEA	BANCHI	CABARET	EXPO	BANCHETTO		COCKTAIL	
								tavoli 6 sedie	tavoli 8 sedie		
<b>Sala Panzini</b>	0	23x46 h 6	1020	1250	600	400	in base a progetto	800 (tavolo unico)	480	2500	x
<b>Foyer</b>	0	-	437	150	-	-	10 stand (m 2x2)	-	-	500	x
<b>Bar 1</b>	0	-	161	-	-	-	-	54	72	150	X
<b>Bar 2</b>	0	-	140	-	-	-	6 stand (m 2x2)	48	64	150	X
<b>Info Point</b>	0	-	6	-	-	-	-	-	-	-	x
<b>Sala Sirio</b>	1	9x10 h 3	90	90	40	-	8 stand (m 2x2)	-	60	100	x
<b>Sala Antares</b>	1	7,7x10 h 3	77	80	35	30	8 stand (m 2x2)	-	50	90	x
<b>Sala Andromeda</b>	1	8x10 h 3	80	80	35	30	8 stand (m 2x2)	-	50	90	x
<b>Sala Aldebaran</b>	-1	8,80x20,70 h 3	177	130	-	-	6 stand (m 2x2)	-	-	-	x
<b>Sala Panoramica</b>	2	h 3,15	970	400	300	-	in base a progetto	600 (tavolo unico)	40	1000	x
<b>Sala Crystal</b>	-1	h 3	65	40	20	-	4 stand (m 2x2)	-	-	-	
<b>Sala Pegaso</b>	-1	h 3	53	-	-	-	-	-	-	-	
<b>Area Espositiva</b>	-1	h 3	704	30	-	-	-	-	-	-	
<b>Ufficio Stampa</b>	1	h 3,15	27	-	-	-	-	15 (tavolo unico)	-	-	





## Dove siamo:

In posizione strategica a metà strada fra Nord e Sud Italia

 **In Auto:** 4 km dall'uscita autostradale di Rimini Nord.

 **In treno:** arrivo alla stazione di Rimini e possibilità di collegamenti diretti Linea diretta Pesaro, Rimini, Ravenna e Bologna.

 **In aereo:** 100 km dall'aeroporto Internazionale "G. Marconi" di Bologna.

 **Autobus:** siamo raggiungibili in un'ora da Bologna con "Shuttle Italy Airport".

## How to reach us:

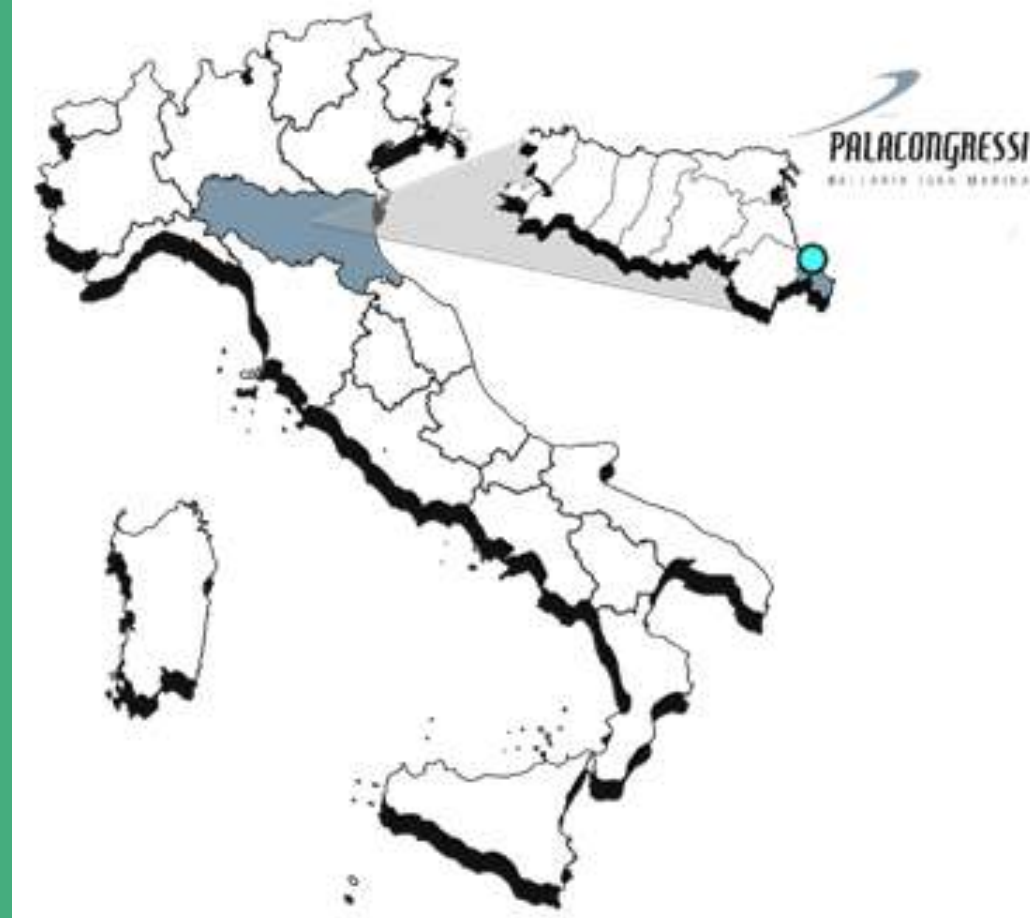
Strategically located in the centre of Italy

**By Car:** 4 km from "Rimini Nord" motorway exit.

**By Train:** arrival at Rimini station, with possibility of direct connections with Direct line Pesaro, Rimini, Ravenna and Bologna.

**By Air:** 100 km from "G. Marconi" International Airport in Bologna.

**By Bus:** we can be reached in an hour from Bologna with "Shuttle Italy Airport".



  
**PALACONGRESSI**  
BELLARIA IGEA MARINA



## Palacongressi Bellaria Igea Marina

Via Uso 1 – 47814

Bellaria Igea Marina (RN) - Italy

Tel. +39 0541 341553

Fax. +39 0541 324442

Mob. +39 377 7092595

[info@palacongressibim.it](mailto:info@palacongressibim.it)

[www.palacongressibim.it](http://www.palacongressibim.it)

# Contattaci Contact Us

